
Product Name: CDT1 Rabbit Monoclonal Antibody**Catalog #: AMRe86448**

For research use only.

Summary

| | |
|----------------------|--|
| Description | Recombinant rabbit monoclonal antibody |
| Host | Rabbit |
| Application | WB,IHC,ICC/IF,IP |
| Reactivity | Human |
| Conjugation | Unconjugated |
| Modification | Unmodified |
| Isotype | IgG |
| Clonality | Monoclonal |
| Form | Liquid |
| Concentration | |
| Storage | Aliquot and store at -20°C (valid for 12 months). Avoid freeze/thaw cycles. |
| Shipping | Ice bags |
| Buffer | Supplied in 50mM Tris-Glycine(pH 7.4), 0.15M NaCl, 40% Glycerol, 0.01% sodium azide and 0.05% protective protein. Stable for 12 months from date of receipt. |
| Purification | Affinity Purification |

Application

| | |
|-------------------------|--|
| Dilution Ratio | WB 1:500-1:2000,IHC 1:50-1:200,ICC/IF 1:100-1:200,IP 1:20-1:50 |
| Molecular Weight | Calculated MW:60 kDa; Observed MW:60 kDa |

Antigen Information

| | |
|--------------------------|-----------------------------------|
| Gene Name | CDT1 |
| Alternative Names | DUP; RIS2 |
| Gene ID | 81620 |
| SwissProt ID | Q9H211 |
| Immunogen | Recombinant protein of human CDT1 |

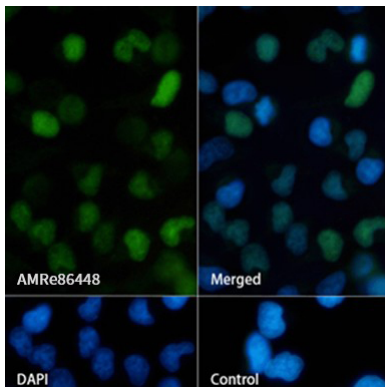
Background

The protein encoded by this gene is involved in the formation of the pre-replication complex that is necessary for DNA replication. The encoded protein can bind geminin, which prevents replication and may function to prevent this protein from

initiating replication at inappropriate origins. Phosphorylation of this protein by cyclin A-dependent kinases results in degradation of the protein. [provided by RefSeq, Mar 2011]

Research Area

Image Data



Immunofluorescence analysis of HeLa cells labelling CDT1 with CDT1 Rabbit Monoclonal Antibody.