

**Product Name: FCRL2 Rabbit Monoclonal Antibody****Catalog #: AMRe86436**

For research use only.

**Summary**

<b>Description</b>	Recombinant rabbit monoclonal antibody
<b>Host</b>	Rabbit
<b>Application</b>	WB,IP
<b>Reactivity</b>	Human
<b>Conjugation</b>	Unconjugated
<b>Modification</b>	Unmodified
<b>Isotype</b>	IgG
<b>Clonality</b>	Monoclonal
<b>Form</b>	Liquid
<b>Concentration</b>	
<b>Storage</b>	Aliquot and store at -20°C (valid for 12 months). Avoid freeze/thaw cycles.
<b>Shipping</b>	Ice bags
<b>Buffer</b>	Supplied in 50mM Tris-Glycine(pH 7.4), 0.15M NaCl, 40% Glycerol, 0.01% sodium azide and 0.05% protective protein. Stable for 12 months from date of receipt.
<b>Purification</b>	Affinity Purification

**Application**

<b>Dilution Ratio</b>	WB 1:500-1:2000,IP 1:50-1:100
<b>Molecular Weight</b>	Calculated MW:56 kDa; Observed MW:53 kDa

**Antigen Information**

<b>Gene Name</b>	FCRL2
<b>Alternative Names</b>	FCRH2; IFGP4; IRTA4; SPAP1; CD307b; SPAP1A; SPAP1B; SPAP1C
<b>Gene ID</b>	79368
<b>SwissProt ID</b>	Q96LA5
<b>Immunogen</b>	A synthetic peptide of human FCRL2

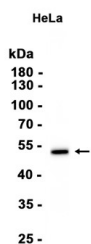
**Background**

This gene encodes a member of the immunoglobulin receptor superfamily and is one of several Fc receptor-like glycoproteins clustered on the long arm of chromosome 1. The encoded protein has four extracellular C2-type immunoglobulin domains, a

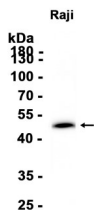
transmembrane domain and a cytoplasmic domain that contains one immunoreceptor-tyrosine activation motif and two immunoreceptor-tyrosine inhibitory motifs. This protein may be a prognostic marker for chronic lymphocytic leukemia. Alternatively spliced transcript variants have been described, but their biological validity has not been determined. [provided by RefSeq, Apr 2009]

## Research Area

## Image Data



Western blot analysis of extracts from HeLa cells using FCRL2 Rabbit Monoclonal Antibody at 1:1000.



Western blot analysis of extracts from Raji cells using AMRe86436 at 1:1000.