

Summary

Production Name	Nampt Rabbit Monoclonal Antibody
Description	Rabbit Monoclonal antibody
Host	Rabbit
Application	WB, IHC-P, ICC/IF, FC, IP
Reactivity	Human,Mouse,Rat

Performance

Conjugation	Unconjugated
Modification	Unmodified
Isotype	IgG
Clonality	Monoclonal
Form	Liquid
Storage	Store at 4°C short term. Aliquot and store at -20°C long term. Avoid freeze/thaw cycles.
Buffer	Supplied in 50mM Tris-Glycine(pH 7.4), 0.15M NaCl, 40% Glycerol, 0.01% sodium azide and 0.05% protective protein. Stable for 12 months from date of receipt.
Purification	Affinity Purification

Immunogen

Gene Name	Nampt
Alternative Names	VF; PBEF; PBEF1; VISFATIN; 1110035O14Rik
Gene ID	10135
SwissProt ID	P43490.

Application

Dilution Ratio	WB: 1:1000 IHC-P: 1:200-1:2000 ICC/IF: 1:100 FC: 1:200-1:500 IP: 1:20-1:50
Molecular Weight	Calculated MW:56 kDa; Observed MW:56 kDa

Background

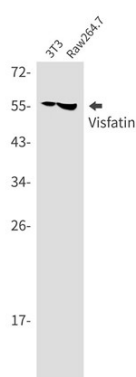
Product Name: Nampt Rabbit Monoclonal Antibody
Catalog #: AMRe86435



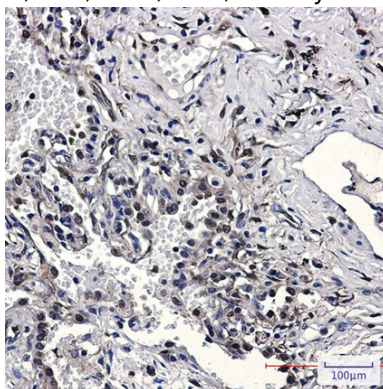
This gene encodes a protein that catalyzes the condensation of nicotinamide with 5-phosphoribosyl-1-pyrophosphate to yield nicotinamide mononucleotide, one step in the biosynthesis of nicotinamide adenine dinucleotide. The protein belongs to the nicotinic acid phosphoribosyltransferase (NAPRTase) family and is thought to be involved in many important biological processes, including metabolism, stress response and aging. This gene has a pseudogene on chromosome 10. [provided by RefSeq, Feb 2011]

Research Area

Image Data

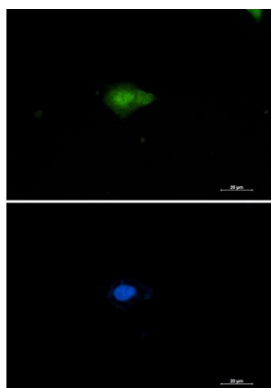


Western blot detection of Visfatin in Hela,A549,HL-60,U2OS,C6 cell lysates using Visfatin antibody(1:1000 diluted).

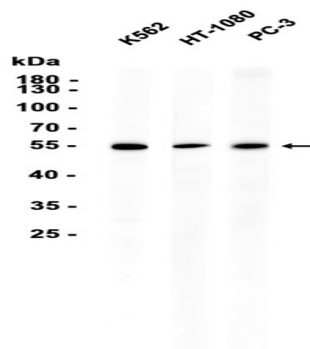


Immunohistochemical analysis of paraffin-embedded human lung cancer using AMRe86435 antibody.

Product Name: Nampt Rabbit Monoclonal Antibody
Catalog #: AMRe86435



Immunofluorescent analysis of U87-MG cells using AMRe86435 antibody (green), and DAPI (blue).



Western blot analysis of extracts from K562, HT-1080, PC-3 cells using AMRe86435 at 1:1000.

Note

For research use only.