

Product Name: Cytokeratin 4 Rabbit Monoclonal Antibody**Catalog #: AMRe86425**

For research use only.

Summary

Description	Recombinant rabbit monoclonal antibody
Host	Rabbit
Application	WB,IHC,ICC/IF
Reactivity	Human,Rat
Conjugation	Unconjugated
Modification	Unmodified
Isotype	IgG
Clonality	Monoclonal
Form	Liquid
Concentration	
Storage	Aliquot and store at -20°C (valid for 12 months). Avoid freeze/thaw cycles.
Shipping	Ice bags
Buffer	Supplied in 50mM Tris-Glycine(pH 7.4), 0.15M NaCl, 40% Glycerol, 0.01% sodium azide and 0.05% protective protein. Stable for 12 months from date of receipt.
Purification	Affinity Purification

Application

Dilution Ratio	WB 1:1000-1:5000,IHC 1:100-1:200,ICC/IF 1:100-1:200
Molecular Weight	Calculated MW:57 kDa; Observed MW:57 kDa

Antigen Information

Gene Name	Cytokeratin 4
Alternative Names	K4; CK4; CK-4; CYK4; WSN1
Gene ID	3851
SwissProt ID	P19013
Immunogen	A synthetic peptide of human Cytokeratin 4

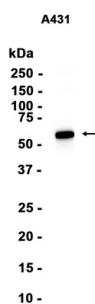
Background

The protein encoded by this gene is a member of the keratin gene family. The type II cytokeratins consist of basic or neutral proteins which are arranged in pairs of heterotypic keratin chains coexpressed during differentiation of simple and stratified

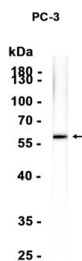
epithelial tissues. This type II cytokeratin is specifically expressed in differentiated layers of the mucosal and esophageal epithelia with family member KRT13. Mutations in these genes have been associated with White Sponge Nevus, characterized by oral, esophageal, and anal leukoplakia. The type II cytokeratins are clustered in a region of chromosome 12q12-q13. [provided by RefSeq, Jul 2008]

Research Area

Image Data



Western blot analysis of extracts from A431 cells using Cytokeratin 4 Rabbit Monoclonal Antibody at 1:1000.



Western blot analysis of extracts from PC-3 cells using AMRe86425 at 1:1000.