

**Product Name: PRNP Rabbit Monoclonal Antibody**  
**Catalog #: AMRe86424**



## Summary

<b>Production Name</b>	PRNP Rabbit Monoclonal Antibody
<b>Description</b>	Rabbit Monoclonal antibody
<b>Host</b>	Rabbit
<b>Application</b>	WB, IHC-P, FC
<b>Reactivity</b>	Human,Mouse,Rat

## Performance

<b>Conjugation</b>	Unconjugated
<b>Modification</b>	Unmodified
<b>Isotype</b>	IgG
<b>Clonality</b>	Monoclonal
<b>Form</b>	Liquid
<b>Storage</b>	Store at 4°C short term. Aliquot and store at -20°C long term. Avoid freeze/thaw cycles.
<b>Buffer</b>	Supplied in 50mM Tris-Glycine(pH 7.4), 0.15M NaCl, 40% Glycerol, 0.01% sodium azide and 0.05% BSA. Stable for 12 months from date of receipt.
<b>Purification</b>	Affinity Purification

## Immunogen

<b>Gene Name</b>	PRNP
<b>Alternative Names</b>	CJD; GSS; PrP; ASCR; KURU; PRIP; PrPc; CD230; AltPrP; p27-30; PrP27-30; PrP33-35C
<b>Gene ID</b>	5621
<b>SwissProt ID</b>	P04156.

## Application

<b>Dilution Ratio</b>	WB: 1:1000-1:5000 IHC-P: 1:200-1:500 FC: 1:50-1:100
<b>Molecular Weight</b>	Calculated MW:28 kDa; Observed MW:28 kDa

## Background

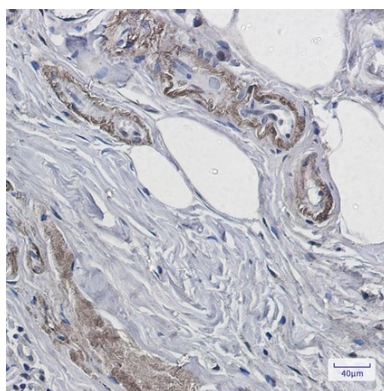
**Product Name: PRNP Rabbit Monoclonal Antibody**  
**Catalog #: AMRe86424**



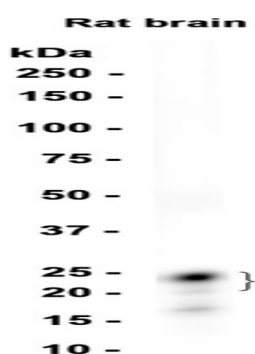
The protein encoded by this gene is a membrane glycosylphosphatidylinositol-anchored glycoprotein that tends to aggregate into rod-like structures. The encoded protein contains a highly unstable region of five tandem octapeptide repeats. This gene is found on chromosome 20, approximately 20 kbp upstream of a gene which encodes a biochemically and structurally similar protein to the one encoded by this gene. Mutations in the repeat region as well as elsewhere in this gene have been associated with Creutzfeldt-Jakob disease, fatal familial insomnia, Gerstmann-Straussler disease, Huntington disease-like 1, and kuru. An overlapping open reading frame has been found for this gene that encodes a smaller, structurally unrelated protein, AltPrp. Alternative splicing results in multiple transcript variants. [provided by RefSeq, Nov 2014]

## Research Area

## Image Data



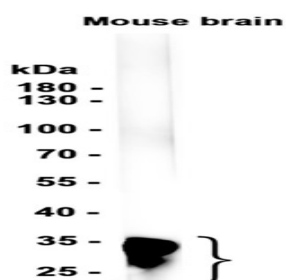
Immunohistochemical analysis of paraffin-embedded human breast cancer using AMRe86424 antibody.



Western blot analysis of extracts from Rat brain tissue using AMRe86424 at 1:1000.

**Product Name: PRNP Rabbit Monoclonal Antibody**  
**Catalog #: AMRe86424**

---



Western blot analysis of extracts from Mouse brain tissue using AMRe86424 at 1:1000.

### **Note**

For research use only.