

Summary

Production Name	Iba1 Rabbit Monoclonal Antibody
Description	Rabbit Monoclonal antibody
Host	Rabbit
Application	WB,IHC,ICC/IF,FC
Reactivity	Human,Mouse,Rat

Performance

Conjugation	Unconjugated
Modification	Unmodified
Isotype	IgG
Clonality	Monoclonal
Form	Liquid
Storage	Store at 4°C short term. Aliquot and store at -20°C long term. Avoid freeze/thaw cycles.
Buffer	Supplied in 50mM Tris-Glycine(pH 7.4), 0.15M NaCl, 40% Glycerol, 0.01% sodium azide and 0.05% BSA. Stable for 12 months from date of receipt.
Purification	Affinity Purification

Immunogen

Gene Name	Iba1
Alternative Names	G1; Iba1; AIF-1; AI607846; D17H6S50E
Gene ID	11629
SwissProt ID	O70200.

Application

Dilution Ratio	WB: 1:1000 IHC: 1:200-1:1000 ICC/IF: 1:100-1:1000 FC: 1:100
Molecular Weight	Calculated MW:17 kDa; Observed MW:17 kDa

Background

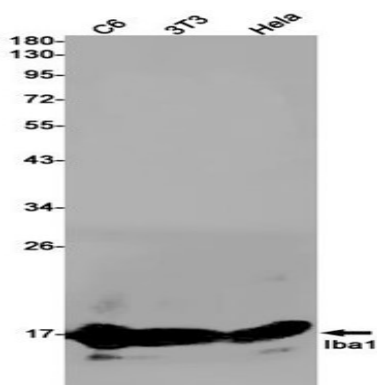
Product Name: Iba1 Rabbit Monoclonal Antibody
Catalog #: AMRe86423



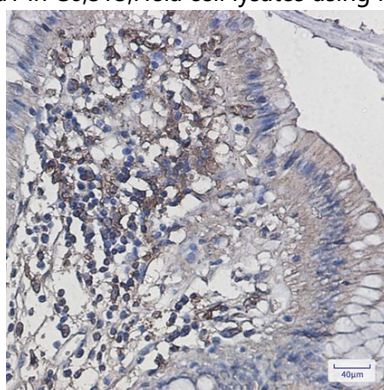
Actin-binding protein that enhances membrane ruffling and RAC activation. Enhances the actin-bundling activity of LCP1. Binds calcium. Plays a role in RAC signaling and in phagocytosis. May play a role in macrophage activation and function. Promotes the proliferation of vascular smooth muscle cells and of T-lymphocytes. Enhances lymphocyte migration. Plays a role in vascular inflammation.

Research Area

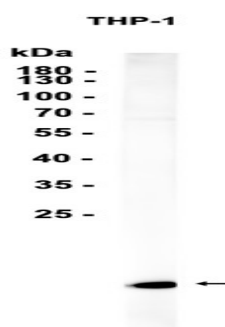
Image Data



Western blot detection of Iba1 in C6, 3T3, HeLa cell lysates using Iba1 antibody (1:1000 diluted).



Immunohistochemical analysis of paraffin-embedded human colon cancer using AMRe86423 antibody.



Product Name: Iba1 Rabbit Monoclonal Antibody
Catalog #: AMRe86423



Western blot analysis of extracts from THP-1 cells using AMRe86423 at 1:1000.

Note

For research use only.