
Product Name: CAP1 Rabbit Monoclonal Antibody**Catalog #: AMRe86422**

For research use only.

Summary

Description	Recombinant rabbit monoclonal antibody
Host	Rabbit
Application	WB,IHC,ICC/IF
Reactivity	Human
Conjugation	Unconjugated
Modification	Unmodified
Isotype	IgG
Clonality	Monoclonal
Form	Liquid
Concentration	
Storage	Aliquot and store at -20°C (valid for 12 months). Avoid freeze/thaw cycles.
Shipping	Ice bags
Buffer	Supplied in 50mM Tris-Glycine(pH 7.4), 0.15M NaCl, 40% Glycerol, 0.01% sodium azide and 0.05% protective protein. Stable for 12 months from date of receipt.
Purification	Affinity Purification

Application

Dilution Ratio	WB 1:2000-1:20000,IHC 1:100-1:200,ICC/IF 1:200-1:500
Molecular Weight	Calculated MW:52 kDa; Observed MW:52 kDa

Antigen Information

Gene Name	CAP1
Alternative Names	CAP; CAP1-PEN
Gene ID	10487
SwissProt ID	Q01518
Immunogen	A synthetic peptide of human CAP1

Background

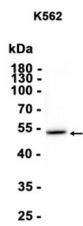
The protein encoded by this gene is related to the *S. cerevisiae* CAP protein, which is involved in the cyclic AMP pathway. The human protein is able to interact with other molecules of the same protein, as well as with CAP2 and actin. Alternatively spliced

transcript variants encoding different isoforms have been identified. [provided by RefSeq, Aug 2016]

Research Area

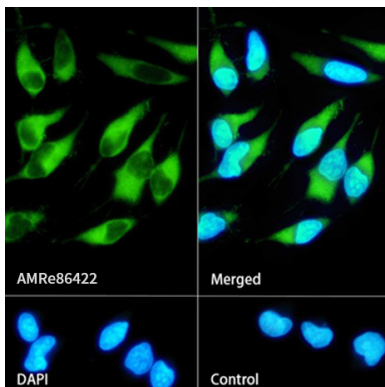
Image Data

K562



kDa
130 -
100 -
70 -
55 -
40 -
35 -
25 -

Western blot analysis of extracts from K562 cells using CAP1 Rabbit Monoclonal Antibody at 1:1000.



Immunofluorescence analysis of HeLa cells labelling CAP1 with AMRe86422.