

Product Name: DPF2 Rabbit Monoclonal Antibody**Catalog #: AMRe86421**

For research use only.

Summary

Description	Recombinant rabbit monoclonal antibody
Host	Rabbit
Application	WB,IHC,ICC/IF,IP
Reactivity	Human,Mouse,Rat
Conjugation	Unconjugated
Modification	Unmodified
Isotype	IgG
Clonality	Monoclonal
Form	Liquid
Concentration	
Storage	Aliquot and store at -20°C (valid for 12 months). Avoid freeze/thaw cycles.
Shipping	Ice bags
Buffer	Supplied in 50mM Tris-Glycine(pH 7.4), 0.15M NaCl, 40% Glycerol, 0.01% sodium azide and 0.05% protective protein. Stable for 12 months from date of receipt.
Purification	Affinity Purification

Application

Dilution Ratio	WB 1:1000-1:5000,IHC 1:100-1:200,ICC/IF 1:100-1:200,IP 1:10-1:100
Molecular Weight	Calculated MW:44 kDa; Observed MW:44 kDa

Antigen Information

Gene Name	DPF2
Alternative Names	REQ; UBID4; ubi-d4
Gene ID	5977
SwissProt ID	Q92785
Immunogen	A synthetic peptide of human DPF2

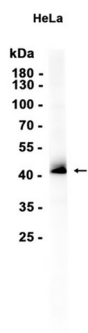
Background

The protein encoded by this gene is a member of the d4 domain family, characterized by a zinc finger-like structural motif. This protein functions as a transcription factor which is necessary for the apoptotic response following deprivation of survival

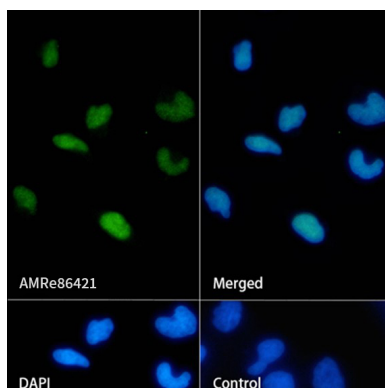
factors. It likely serves a regulatory role in rapid hematopoietic cell growth and turnover. This gene is considered a candidate gene for multiple endocrine neoplasia type I, an inherited cancer syndrome involving multiple parathyroid, enteropancreatic, and pituitary tumors. [provided by RefSeq, Jul 2008]

Research Area

Image Data



Western blot analysis of extracts from HeLa cells using DPF2 Rabbit Monoclonal Antibody at 1:1000.



Immunofluorescence analysis of HeLa cells labelling DPF2 with AMRe86421.