

## Summary

<b>Production Name</b>	CHD1L Rabbit Monoclonal Antibody
<b>Description</b>	Recombinant rabbit monoclonal antibody
<b>Host</b>	Rabbit
<b>Application</b>	WB, IHC-P, ICC/IF, FC, IP
<b>Reactivity</b>	Human,Mouse

## Performance

<b>Conjugation</b>	Unconjugated
<b>Modification</b>	Unmodified
<b>Isotype</b>	IgG
<b>Clonality</b>	Monoclonal
<b>Form</b>	Liquid
<b>Storage</b>	Store at 4°C short term. Aliquot and store at -20°C long term. Avoid freeze/thaw cycles.
<b>Buffer</b>	Supplied in 50mM Tris-Glycine(pH 7.4), 0.15M NaCl, 40% Glycerol, 0.01% sodium azide and 0.05% protective protein. Stable for 12 months from date of receipt.
<b>Purification</b>	Affinity Purification

## Immunogen

<b>Gene Name</b>	CHD1L
<b>Alternative Names</b>	ALC1; CHDL
<b>Gene ID</b>	9557
<b>SwissProt ID</b>	Q86WJ1.

## Application

<b>Dilution Ratio</b>	WB: 1:1000-1:5000 IHC-P: 1:100-1:200 ICC/IF: 1:200-1:500 FC: 1:200-1:500 IP: 1:20-1:50
<b>Molecular Weight</b>	Calculated MW:101 kDa; Observed MW:101 kDa

**Product Name: CHD1L Rabbit Monoclonal Antibody**  
**Catalog #: AMRe86420**

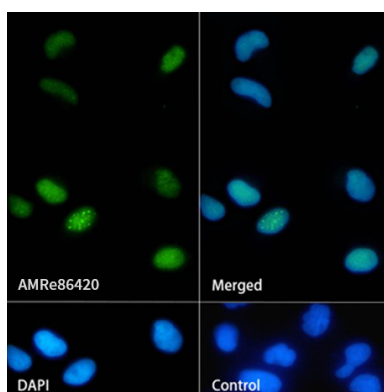


## Background

This gene encodes a DNA helicase protein involved in DNA repair. The protein converts ATP to add poly(ADP-ribose) as it regulates chromatin relaxation following DNA damage. Overexpression of this gene has been linked to several types of cancers. [provided by RefSeq, Feb 2017]

## Research Area

## Image Data



Immunofluorescence analysis of HeLa cells labelling CHD1L with AMRe86420.

## Note

For research use only.