

---

**Product Name: SERCA2 ATPase Rabbit Monoclonal Antibody****Catalog #: AMRe86415**

For research use only.

**Summary**

<b>Description</b>	Recombinant rabbit monoclonal antibody
<b>Host</b>	Rabbit
<b>Application</b>	WB,IHC,ICC/IF,FC
<b>Reactivity</b>	Human,Mouse,Rat
<b>Conjugation</b>	Unconjugated
<b>Modification</b>	Unmodified
<b>Isotype</b>	IgG
<b>Clonality</b>	Monoclonal
<b>Form</b>	Liquid
<b>Concentration</b>	
<b>Storage</b>	Aliquot and store at -20°C (valid for 12 months). Avoid freeze/thaw cycles.
<b>Shipping</b>	Ice bags
<b>Buffer</b>	Supplied in 50mM Tris-Glycine(pH 7.4), 0.15M NaCl, 40% Glycerol, 0.01% sodium azide and 0.05% protective protein. Stable for 12 months from date of receipt.
<b>Purification</b>	Affinity Purification

**Application**

<b>Dilution Ratio</b>	WB 1:1000-1:5000,IHC 1:100-1:200,ICC/IF 1:200-1:500,FC 1:10-1:100
<b>Molecular Weight</b>	Calculated MW:115 kDa; Observed MW:115 kDa

**Antigen Information**

<b>Gene Name</b>	SERCA2 ATPase
<b>Alternative Names</b>	DD; DAR; ATP2B; SERCA2
<b>Gene ID</b>	488
<b>SwissProt ID</b>	P16615
<b>Immunogen</b>	A synthetic peptide of human SERCA2 ATPase

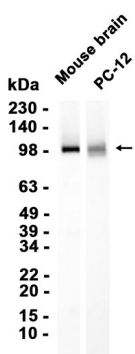
**Background**

This gene encodes one of the SERCA Ca(2+)-ATPases, which are intracellular pumps located in the sarcoplasmic or endoplasmic reticula of the skeletal muscle. This enzyme catalyzes the hydrolysis of ATP coupled with the translocation of calcium from the

cytosol into the sarcoplasmic reticulum lumen, and is involved in regulation of the contraction/relaxation cycle. Mutations in this gene cause Darier-White disease, also known as keratosis follicularis, an autosomal dominant skin disorder characterized by loss of adhesion between epidermal cells and abnormal keratinization. Other types of mutations in this gene have been associated with various forms of muscular dystrophies. Alternative splicing results in multiple transcript variants encoding different isoforms. [provided by RefSeq, Dec 2019]

## Research Area

## Image Data



Western blot analysis of extracts from Mouse brain tissue and PC-12 cells using SERCA2 ATPase Rabbit Monoclonal Antibody at 1:5000.