
Product Name: DIAPH1 Rabbit Monoclonal Antibody**Catalog #: AMRe86413**

For research use only.

Summary

Description	Recombinant rabbit monoclonal antibody
Host	Rabbit
Application	WB,IHC,ICC/IF,FC
Reactivity	Human, Mouse, Rat
Conjugation	Unconjugated
Modification	Unmodified
Isotype	IgG
Clonality	Monoclonal
Form	Liquid
Concentration	
Storage	Aliquot and store at -20°C (valid for 12 months). Avoid freeze/thaw cycles.
Shipping	Ice bags
Buffer	Supplied in 50mM Tris-Glycine(pH 7.4), 0.15M NaCl, 40% Glycerol, 0.01% sodium azide and 0.05% protective protein. Stable for 12 months from date of receipt.
Purification	Affinity Purification

Application

Dilution Ratio	WB 1:1000-1:5000,IHC 1:50-1:200,ICC/IF 1:20-1:50,FC 1:50-1:200
Molecular Weight	Calculated MW:141 kDa; Observed MW:150 kDa

Antigen Information

Gene Name	DIAPH1
Alternative Names	DIA1; DRF1; DFNA1; LFHL1; SCBMS; hDIA1; mDia1; DIAP1
Gene ID	1729
SwissProt ID	O60610
Immunogen	A synthetic peptide of human DIAPH1

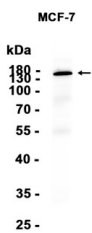
Background

This gene is a homolog of the Drosophila diaphanous gene, and has been linked to autosomal dominant, fully penetrant, nonsyndromic sensorineural progressive low-frequency hearing loss. Actin polymerization involves proteins known to interact

with diaphanous protein in *Drosophila* and mouse. It has therefore been speculated that this gene may have a role in the regulation of actin polymerization in hair cells of the inner ear. Alternatively spliced transcript variants encoding distinct isoforms have been found for this gene. [provided by RefSeq, Jul 2008]

Research Area

Image Data



Western blot analysis of extracts from MCF-7 cells using DIAPH1 Rabbit Monoclonal Antibody at 1:1000.