
Product Name: ALAS1 Rabbit Monoclonal Antibody**Catalog #: AMRe86411**

For research use only.

Summary

Description	Recombinant rabbit monoclonal antibody
Host	Rabbit
Application	WB,IHC
Reactivity	Human
Conjugation	Unconjugated
Modification	Unmodified
Isotype	IgG
Clonality	Monoclonal
Form	Liquid
Concentration	
Storage	Aliquot and store at -20°C (valid for 12 months). Avoid freeze/thaw cycles.
Shipping	Ice bags
Buffer	Supplied in 50mM Tris-Glycine(pH 7.4), 0.15M NaCl, 40% Glycerol, 0.01% sodium azide and 0.05% protective protein. Stable for 12 months from date of receipt.
Purification	Affinity Purification

Application

Dilution Ratio	WB 1:1000-1:5000,IHC 1:200-1:500
Molecular Weight	Calculated MW:71 kDa; Observed MW:71 kDa

Antigen Information

Gene Name	ALAS1
Alternative Names	ALAS; MIG4; ALAS3; ALASH; ALAS-H
Gene ID	211
SwissProt ID	P13196
Immunogen	A synthetic peptide of human ALAS1

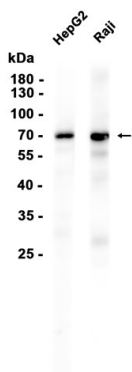
Background

This gene encodes the mitochondrial enzyme which catalyzes the rate-limiting step in heme (iron-protoporphyrin) biosynthesis. The enzyme encoded by this gene is the housekeeping enzyme; a separate gene encodes a form of the enzyme

that is specific for erythroid tissue. The level of the mature encoded protein is regulated by heme: high levels of heme down-regulate the mature enzyme in mitochondria while low heme levels up-regulate. A pseudogene of this gene is located on chromosome 12. Alternative splicing results in multiple transcript variants encoding different isoforms. [provided by RefSeq, Jan 2015]

Research Area

Image Data



Western blot analysis of extracts from HepG2 , Raji cells using ALAS1 Rabbit Monoclonal Antibody at 1:1000.