

Product Name: alpha 2 Macroglobulin Rabbit Monoclonal Antibody**Catalog #:** AMRe86405

For research use only.

Summary

Description	Recombinant rabbit monoclonal antibody
Host	Rabbit
Application	WB
Reactivity	Human
Conjugation	Unconjugated
Modification	Unmodified
Isotype	IgG
Clonality	Monoclonal
Form	Liquid
Concentration	
Storage	Aliquot and store at -20°C (valid for 12 months). Avoid freeze/thaw cycles.
Shipping	Ice bags
Buffer	Supplied in 50mM Tris-Glycine(pH 7.4), 0.15M NaCl, 40% Glycerol, 0.01% sodium azide and 0.05% protective protein. Stable for 12 months from date of receipt.
Purification	Affinity Purification

Application

Dilution Ratio	WB 1:1000-1:5000
Molecular Weight	Calculated MW:163 kDa; Observed MW:163 kDa

Antigen Information

Gene Name	alpha 2 Macroglobulin
Alternative Names	A2MD; CPAMD5; FWP007; S863-7
Gene ID	2
SwissProt ID	P01023
Immunogen	A synthetic peptide of human alpha 2 Macroglobulin

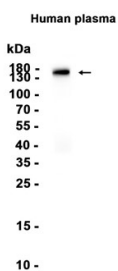
Background

The protein encoded by this gene is a protease inhibitor and cytokine transporter. It uses a bait-and-trap mechanism to inhibit a broad spectrum of proteases, including trypsin, thrombin and collagenase. It can also inhibit inflammatory cytokines, and it

thus disrupts inflammatory cascades. Mutations in this gene are a cause of alpha-2-macroglobulin deficiency. This gene is implicated in Alzheimer's disease (AD) due to its ability to mediate the clearance and degradation of A-beta, the major component of beta-amyloid deposits. A related pseudogene, which is also located on the p arm of chromosome 12, has been identified. [provided by RefSeq, Nov 2016]

Research Area

Image Data



Western blot analysis of extracts from Human plasma tissue using alpha 2 Macroglobulin Rabbit Monoclonal Antibody at 1:1000.