
Product Name: TAB1 Rabbit Monoclonal Antibody**Catalog #: AMRe86404**

For research use only.

Summary

| | |
|----------------------|--|
| Description | Recombinant rabbit monoclonal antibody |
| Host | Rabbit |
| Application | WB,IHC,ICC/IF,FC |
| Reactivity | Human,Mouse,Rat |
| Conjugation | Unconjugated |
| Modification | Unmodified |
| Isotype | IgG |
| Clonality | Monoclonal |
| Form | Liquid |
| Concentration | |
| Storage | Aliquot and store at -20°C (valid for 12 months). Avoid freeze/thaw cycles. |
| Shipping | Ice bags |
| Buffer | Supplied in 50mM Tris-Glycine(pH 7.4), 0.15M NaCl, 40% Glycerol, 0.01% sodium azide and 0.05% protective protein. Stable for 12 months from date of receipt. |
| Purification | Affinity Purification |

Application

| | |
|-------------------------|---|
| Dilution Ratio | WB 1:500-1:2000,IHC 1:100-1:200,ICC/IF 1:100-1:200,FC 1:20-1:50 |
| Molecular Weight | Calculated MW:55 kDa; Observed MW:55 kDa |

Antigen Information

| | |
|--------------------------|-----------------------------------|
| Gene Name | TAB1 |
| Alternative Names | 3'-Tab1; MAP3K7IP1 |
| Gene ID | 10454 |
| SwissProt ID | Q15750 |
| Immunogen | A synthetic peptide of human TAB1 |

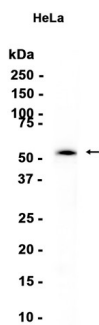
Background

The protein encoded by this gene was identified as a regulator of the MAP kinase kinase kinase MAP3K7/TAK1, which is known to mediate various intracellular signaling pathways, such as those induced by TGF beta, interleukin 1, and WNT-1. This protein

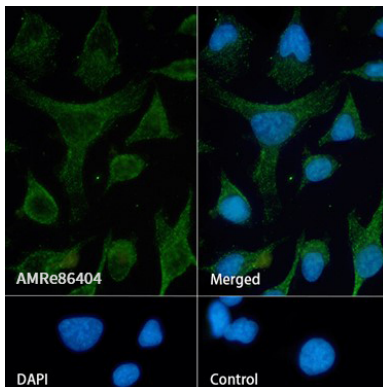
interacts and thus activates TAK1 kinase. It has been shown that the C-terminal portion of this protein is sufficient for binding and activation of TAK1, while a portion of the N-terminus acts as a dominant-negative inhibitor of TGF beta, suggesting that this protein may function as a mediator between TGF beta receptors and TAK1. This protein can also interact with and activate the mitogen-activated protein kinase 14 (MAPK14/p38alpha), and thus represents an alternative activation pathway, in addition to the MAPKK pathways, which contributes to the biological responses of MAPK14 to various stimuli. Alternatively spliced transcript variants encoding distinct isoforms have been reported. [provided by RefSeq, Jul 2008]

Research Area

Image Data



Western blot analysis of extracts from HeLa cells using TAB1 Rabbit Monoclonal Antibody at 1:1000.



Immunofluorescence analysis of HeLa cells labelling TAB1 with AMRe86404.