

Product Name: WDR12 Rat Monoclonal Antibody
Catalog #: AMRe86402



Summary

Production Name	WDR12 Rat Monoclonal Antibody
Description	Rabbit Monoclonal antibody
Host	Rat
Application	WB, ICC/IF
Reactivity	Human

Performance

Conjugation	Unconjugated
Modification	Unmodified
Isotype	IgG
Clonality	Monoclonal
Form	Liquid
Storage	Store at 4°C short term. Aliquot and store at -20°C long term. Avoid freeze/thaw cycles.
Buffer	Supplied in 50mM Tris-Glycine(pH 7.4), 0.15M NaCl, 40% Glycerol, 0.01% sodium azide and 0.05% protective protein. Stable for 12 months from date of receipt.
Purification	Affinity Purification

Immunogen

Gene Name	WDR12 Rat Monoclonal Antibody
Alternative Names	YTM1
Gene ID	55759
SwissProt ID	Q9GZL7.

Application

Dilution Ratio	WB: 1:1000 ICC/IF: 1:100-1:200
Molecular Weight	Calculated MW:48 kDa; Observed MW:48 kDa

Background

This gene encodes a member of the WD repeat protein family. WD repeats are minimally conserved regions of

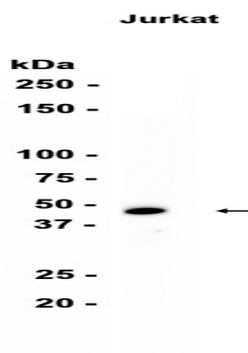
Product Name: WDR12 Rat Monoclonal Antibody
Catalog #: AMRe86402



approximately 40 amino acids typically bracketed by gly-his and trp-aspartate (GH-WD), which may facilitate formation of heterotrimeric or multiprotein complexes. Members of this family are involved in a variety of cellular processes, including cell cycle progression, signal transduction, apoptosis, and gene regulation. This protein is highly similar to the mouse WD repeat domain 12 protein at the amino acid level. The protein encoded by this gene is a component of a nucleolar protein complex that affects maturation of the large ribosomal subunit.[provided by RefSeq, Dec 2008]

Research Area

Image Data



Western blot analysis of extracts from Jurkat cells using AMRe86402 at 1:1000.

Note

For research use only.