
Product Name: EDG2 Rabbit Monoclonal Antibody**Catalog #: AMRe86399**

For research use only.

Summary

Description	Recombinant rabbit monoclonal antibody
Host	Rabbit
Application	WB,IHC,IP
Reactivity	Human
Conjugation	Unconjugated
Modification	Unmodified
Isotype	IgG
Clonality	Monoclonal
Form	Liquid
Concentration	
Storage	Aliquot and store at -20°C (valid for 12 months). Avoid freeze/thaw cycles.
Shipping	Ice bags
Buffer	Supplied in 50mM Tris-Glycine(pH 7.4), 0.15M NaCl, 40% Glycerol, 0.01% sodium azide and 0.05% protective protein. Stable for 12 months from date of receipt.
Purification	Affinity Purification

Application

Dilution Ratio	WB 1:1000-1:5000,IHC 1:100-1:200,IP 1:10-1:100
Molecular Weight	Calculated MW:41 kDa; Observed MW:41 kDa

Antigen Information

Gene Name	EDG2
Alternative Names	EDG2; LPA1; VZG1; GPR26; edg-2; vzg-1; Gpcr26; Mrec1.3; rec.1.3
Gene ID	1902
SwissProt ID	Q92633
Immunogen	A synthetic peptide of human EDG2

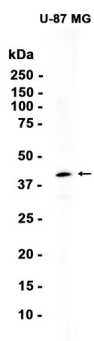
Background

The integral membrane protein encoded by this gene is a lysophosphatidic acid (LPA) receptor from a group known as EDG receptors. These receptors are members of the G protein-coupled receptor superfamily. Utilized by LPA for cell signaling, EDG

receptors mediate diverse biologic functions, including proliferation, platelet aggregation, smooth muscle contraction, inhibition of neuroblastoma cell differentiation, chemotaxis, and tumor cell invasion. Two transcript variants encoding the same protein have been identified for this gene [provided by RefSeq, Jul 2008]

Research Area

Image Data



Western blot analysis of extracts from U-87MG cells using EDG2 Rabbit Monoclonal Antibody at 1:1000.