
Product Name: Casein Kinase 1 gamma 2 Rabbit Monoclonal Antibody**Catalog #: AMRe86393**

For research use only.

Summary

Description	Recombinant rabbit monoclonal antibody
Host	Rabbit
Application	WB,FC,IP
Reactivity	Human,Mouse,Rat
Conjugation	Unconjugated
Modification	Unmodified
Isotype	IgG
Clonality	Monoclonal
Form	Liquid
Concentration	
Storage	Aliquot and store at -20°C (valid for 12 months). Avoid freeze/thaw cycles.
Shipping	Ice bags
Buffer	Supplied in 50mM Tris-Glycine(pH 7.4), 0.15M NaCl, 40% Glycerol, 0.01% sodium azide and 0.05% protective protein. Stable for 12 months from date of receipt.
Purification	Affinity Purification

Application

Dilution Ratio	WB 1:500-1:2000,FC 1:200-1:500,IP 1:20-1:50
Molecular Weight	Calculated MW:48 kDa; Observed MW:48 kDa

Antigen Information

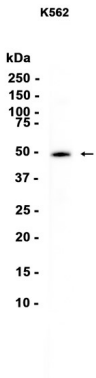
Gene Name	Casein Kinase 1 gamma 2
Alternative Names	CK1g2
Gene ID	1455, 103236, 65278
SwissProt ID	P78368, Q8BVP5, Q62762
Immunogen	A synthetic peptide of human Casein Kinase 1 gamma 2

Background

Enables protein serine/threonine kinase activity. Involved in peptidyl-serine phosphorylation. Located in membrane. [provided by Alliance of Genome Resources, Apr 2022]

Research Area

Image Data



Western blot analysis of extracts from K562 cells using Casein Kinase 1 gamma 2 Rabbit Monoclonal Antibody at 1:1000.