
Product Name: Islet 1 Rabbit Monoclonal Antibody**Catalog #: AMRe86392**

For research use only.

Summary

Description	Recombinant rabbit monoclonal antibody
Host	Rabbit
Application	WB,ICC/IF,FC,IP
Reactivity	Human, Mouse
Conjugation	Unconjugated
Modification	Unmodified
Isotype	IgG
Clonality	Monoclonal
Form	Liquid
Concentration	
Storage	Aliquot and store at -20°C (valid for 12 months). Avoid freeze/thaw cycles.
Shipping	Ice bags
Buffer	Supplied in 50mM Tris-Glycine(pH 7.4), 0.15M NaCl, 40% Glycerol, 0.01% sodium azide and 0.05% protective protein. Stable for 12 months from date of receipt.
Purification	Affinity Purification

Application

Dilution Ratio	WB 1:1000-1:2000,ICC/IF 1:100-1:200,FC 1:20-1:50,IP 1:20-1:50
Molecular Weight	Calculated MW:39 kDa; Observed MW:39 kDa

Antigen Information

Gene Name	Islet 1
Alternative Names	Isl-1; ISLET1
Gene ID	3670
SwissProt ID	P61371
Immunogen	A synthetic peptide of human Islet 1

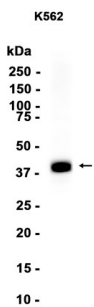
Background

This gene encodes a member of the LIM/homeodomain family of transcription factors. The encoded protein binds to the enhancer region of the insulin gene, among others, and may play an important role in regulating insulin gene expression. The

encoded protein is central to the development of pancreatic cell lineages and may also be required for motor neuron generation. Mutations in this gene have been associated with maturity-onset diabetes of the young. [provided by RefSeq, Jul 2008]

Research Area

Image Data



Western blot analysis of extracts from K562 cells using Islet 1 Rabbit Monoclonal Antibody at 1:1000.