
Product Name: Phospho-ErbB 2 (Tyr1248)/ErbB 4 (Tyr1284) Rabbit Monoclonal Antibody
Catalog #: AMRe86382

For research use only.

Summary

Description	Recombinant rabbit monoclonal antibody
Host	Rabbit
Application	WB,ICC/IF,FC,IP
Reactivity	Human
Conjugation	Unconjugated
Modification	Phosphorylated
Isotype	IgG
Clonality	Monoclonal
Form	Liquid
Concentration	0.5mg/ml. The concentration of this product may be batch-dependent.
Storage	Aliquot and store at -20°C (valid for 12 months). Avoid freeze/thaw cycles.
Shipping	Ice bags
Buffer	Supplied in 50mM Tris-Glycine(pH 7.4), 0.15M NaCl, 40% Glycerol, 0.01% sodium azide and 0.05% protective protein. Stable for 12 months from date of receipt.
Purification	Affinity Purification

Application

Dilution Ratio	WB 1:1000-1:5000,ICC/IF 1:100-1:200,FC 1:20-1:50,IP 1:20-1:50
Molecular Weight	Calculated MW:147 kDa; Observed MW:180 kDa

Antigen Information

Gene Name	Phospho-ErbB 2 (Tyr1248)/ErbB 4 (Tyr1284)
Alternative Names	NEU; NGL; HER2; TKR1; CD340; HER-2; MLN 19; HER-2/neu
Gene ID	2064
SwissProt ID	P04626
Immunogen	A synthetic phosphopeptide corresponding to residues surrounding Tyr1248 of human ErbB 2

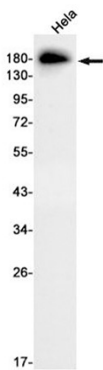
Background

This gene encodes a member of the epidermal growth factor (EGF) receptor family of receptor tyrosine kinases. This protein has

no ligand binding domain of its own and therefore cannot bind growth factors. However, it does bind tightly to other ligand-bound EGF receptor family members to form a heterodimer, stabilizing ligand binding and enhancing kinase-mediated activation of downstream signalling pathways, such as those involving mitogen-activated protein kinase and phosphatidylinositol-3 kinase. Allelic variations at amino acid positions 654 and 655 of isoform a (positions 624 and 625 of isoform b) have been reported, with the most common allele, Ile654/Ile655, shown here. Amplification and/or overexpression of this gene has been reported in numerous cancers, including breast and ovarian tumors. Alternative splicing results in several additional transcript variants, some encoding different isoforms and others that have not been fully characterized. [provided by RefSeq, Jul 2008]

Research Area

Image Data



Western blot analysis of extracts from HeLa cells using Phospho-ErbB 2 (Tyr1248)/ErbB 4 (Tyr1284) Rabbit Monoclonal Antibody at 1:1000.