

Product Name: SENP1 Rabbit Monoclonal Antibody**Catalog #: AMRe86379**

For research use only.

Summary

| | |
|----------------------|--|
| Description | Recombinant rabbit monoclonal antibody |
| Host | Rabbit |
| Application | WB,IHC,ICC/IF,FC |
| Reactivity | Human |
| Conjugation | Unconjugated |
| Modification | Unmodified |
| Isotype | IgG |
| Clonality | Monoclonal |
| Form | Liquid |
| Concentration | |
| Storage | Aliquot and store at -20°C (valid for 12 months). Avoid freeze/thaw cycles. |
| Shipping | Ice bags |
| Buffer | Supplied in 50mM Tris-Glycine(pH 7.4), 0.15M NaCl, 40% Glycerol, 0.01% sodium azide and 0.05% protective protein. Stable for 12 months from date of receipt. |
| Purification | Affinity Purification |

Application

| | |
|-------------------------|---|
| Dilution Ratio | WB 1:1000-1:10000,IHC 1:100-1:200,ICC/IF 1:100-1:500,FC 1:20-1:50 |
| Molecular Weight | Calculated MW:74 kDa; Observed MW:74 kDa |

Antigen Information

| | |
|--------------------------|------------------------------------|
| Gene Name | SENP1 |
| Alternative Names | SuPr-2 |
| Gene ID | 29843 |
| SwissProt ID | Q9P0U3 |
| Immunogen | A synthetic peptide of human SENP1 |

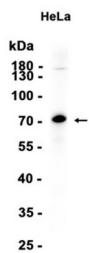
Background

This gene encodes a cysteine protease that specifically targets members of the small ubiquitin-like modifier (SUMO) protein family. This protease regulates SUMO pathways by deconjugating sumoylated proteins. This protease also functions to process

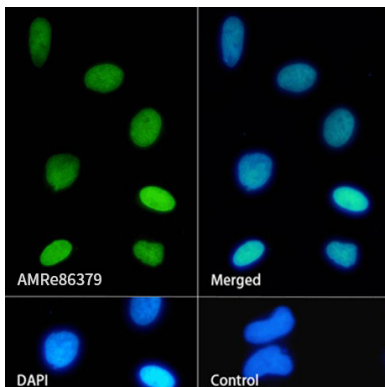
the precursor SUMO proteins into their mature form. Alternate splicing results in multiple transcript variants. [provided by RefSeq, Jun 2012]

Research Area

Image Data



Western blot analysis of extracts from HeLa cells using SENP1 Rabbit Monoclonal Antibody at 1:1000.



Immunofluorescence analysis of HeLa cells labelling SENP1 with AMRe86379.