

---

**Product Name: CD34 Rabbit Monoclonal Antibody****Catalog #: AMRe86372**

For research use only.

**Summary**

<b>Description</b>	Recombinant rabbit monoclonal antibody
<b>Host</b>	Rabbit
<b>Application</b>	WB,IHC,IP
<b>Reactivity</b>	Human
<b>Conjugation</b>	Unconjugated
<b>Modification</b>	Unmodified
<b>Isotype</b>	IgG
<b>Clonality</b>	Monoclonal
<b>Form</b>	Liquid
<b>Concentration</b>	
<b>Storage</b>	Aliquot and store at -20°C (valid for 12 months). Avoid freeze/thaw cycles.
<b>Shipping</b>	Ice bags
<b>Buffer</b>	Supplied in 50mM Tris-Glycine(pH 7.4), 0.15M NaCl, 40% Glycerol, 0.01% sodium azide and 0.05% protective protein. Stable for 12 months from date of receipt.
<b>Purification</b>	Affinity Purification

**Application**

<b>Dilution Ratio</b>	WB 1:5000-1:50000,IHC 1:100-1:200,IP 1:50-1:100
<b>Molecular Weight</b>	Calculated MW:41 kDa; Observed MW:80-120 kDa

**Antigen Information**

<b>Gene Name</b>	CD34
<b>Alternative Names</b>	Hematopoietic progenitor cell antigen CD34
<b>Gene ID</b>	947
<b>SwissProt ID</b>	P28906
<b>Immunogen</b>	A synthetic peptide of human CD34

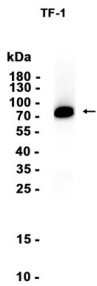
**Background**

The protein encoded by this gene may play a role in the attachment of stem cells to the bone marrow extracellular matrix or to stromal cells. This single-pass membrane protein is highly glycosylated and phosphorylated by protein kinase C. Two transcript

variants encoding different isoforms have been found for this gene. [provided by RefSeq, Aug 2011]

## Research Area

## Image Data



Western blot analysis of extracts from TF-1 cells using CD34 Rabbit Monoclonal Antibody at 1:1000.