

---

**Product Name: Biglycan Rabbit Monoclonal Antibody****Catalog #: AMRe86369**

For research use only.

**Summary**

<b>Description</b>	Recombinant rabbit monoclonal antibody
<b>Host</b>	Rabbit
<b>Application</b>	WB,FC
<b>Reactivity</b>	Human,Mouse,Rat
<b>Conjugation</b>	Unconjugated
<b>Modification</b>	Unmodified
<b>Isotype</b>	IgG
<b>Clonality</b>	Monoclonal
<b>Form</b>	Liquid
<b>Concentration</b>	
<b>Storage</b>	Aliquot and store at -20°C (valid for 12 months). Avoid freeze/thaw cycles.
<b>Shipping</b>	Ice bags
<b>Buffer</b>	Supplied in 50mM Tris-Glycine(pH 7.4), 0.15M NaCl, 40% Glycerol, 0.01% sodium azide and 0.05% protective protein. Stable for 12 months from date of receipt.
<b>Purification</b>	Affinity Purification

**Application**

<b>Dilution Ratio</b>	WB 1:1000-1:5000,FC 1:100-1:500
<b>Molecular Weight</b>	Calculated MW:42 kDa; Observed MW:42 kDa

**Antigen Information**

<b>Gene Name</b>	Biglycan
<b>Alternative Names</b>	PGI; MRLS; DSPG1; PG-S1; SEMDX; SLRR1A
<b>Gene ID</b>	633
<b>SwissProt ID</b>	P21810
<b>Immunogen</b>	A synthetic peptide of human Biglycan

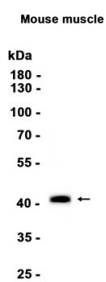
**Background**

This gene encodes a member of the small leucine-rich proteoglycan (SLRP) family of proteins. The encoded preproprotein is proteolytically processed to generate the mature protein, which plays a role in bone growth, muscle development and

regeneration, and collagen fibril assembly in multiple tissues. This protein may also regulate inflammation and innate immunity. Additionally, the encoded protein may contribute to atherosclerosis and aortic valve stenosis in human patients. This gene and the related gene decorin are thought to be the result of a gene duplication. [provided by RefSeq, Nov 2015]

## Research Area

## Image Data



Western blot analysis of extracts from Mouse muscle tissue using Biglycan Rabbit Monoclonal Antibody at 1:1000.