
Summary

Production Name	Vinculin Rabbit Monoclonal Antibody
Description	Recombinant rabbit monoclonal antibody
Host	Rabbit
Application	WB
Reactivity	Human,Mouse,Rat

Performance

Conjugation	Unconjugated
Modification	Unmodified
Isotype	IgG
Clonality	Monoclonal
Form	Liquid
Storage	Store at 4°C short term. Aliquot and store at -20°C long term. Avoid freeze/thaw cycles.
Buffer	Supplied in 50mM Tris-Glycine(pH 7.4), 0.15M NaCl, 40% Glycerol, 0.01% sodium azide and 0.05% protective protein. Stable for 12 months from date of receipt.
Purification	Affinity Purification

Immunogen

Gene Name	Vinculin
Alternative Names	MV; MVCL; CMD1W; CMH15; HEL114
Gene ID	7414
SwissProt ID	P18206.

Application

Dilution Ratio	WB 1:500-1:2000
Molecular Weight	Calculated MW:124 kDa; Observed MW:124 kDa

Background

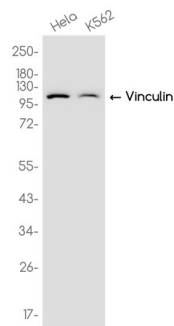
Product Name: Vinculin Rabbit Monoclonal Antibody
Catalog #: AMRe86360



Vinculin is a cytoskeletal protein associated with cell-cell and cell-matrix junctions, where it is thought to function as one of several interacting proteins involved in anchoring F-actin to the membrane. Defects in VCL are the cause of cardiomyopathy dilated type 1W. Dilated cardiomyopathy is a disorder characterized by ventricular dilation and impaired systolic function, resulting in congestive heart failure and arrhythmia. Multiple alternatively spliced transcript variants have been found for this gene, but the biological validity of some variants has not been determined. [provided by RefSeq, Jul 2008]

Research Area

Image Data



Western blot analysis of extracts from HeLa, K562 cells using AMRe86360 at 1:1000.

Note

For research use only.