

**Product Name: Lamin B1 Rabbit Monoclonal Antibody****Catalog #: AMRe86356**

For research use only.

**Summary**

|                      |  |
|----------------------|--|
| <b>Description</b>   | Recombinant rabbit monoclonal antibody   |
| <b>Host</b>          | Rabbit   |
| <b>Application</b>   | WB,IHC,ICC/IF  |
| <b>Reactivity</b>    | Human, Mouse, Rat  |
| <b>Conjugation</b>   | Unconjugated   |
| <b>Modification</b>  | Unmodified   |
| <b>Isotype</b>       | IgG  |
| <b>Clonality</b>     | Monoclonal   |
| <b>Form</b>          | Liquid   |
| <b>Concentration</b> |  |
| <b>Storage</b>       | Aliquot and store at -20°C (valid for 12 months). Avoid freeze/thaw cycles.  |
| <b>Shipping</b>      | Ice bags   |
| <b>Buffer</b>        | Supplied in 50mM Tris-Glycine(pH 7.4), 0.15M NaCl, 40% Glycerol, 0.01% sodium azide and 0.05% protective protein. Stable for 12 months from date of receipt. |
| <b>Purification</b>  | Affinity Purification  |

**Application**

|                         |   |
|-------------------------|---|
| <b>Dilution Ratio</b>   | WB 1:500-1:2000,IHC 1:20-1:500,ICC/IF 1:20-1:50 |
| <b>Molecular Weight</b> | Calculated MW:66 kDa; Observed MW:70 kDa        |

**Antigen Information**

|                          |                                       |
|--------------------------|---------------------------------------|
| <b>Gene Name</b>         | Lamin B1                              |
| <b>Alternative Names</b> | LMN; ADLD; LMN2; LMNB                 |
| <b>Gene ID</b>           | 4001                                  |
| <b>SwissProt ID</b>      | P20700                                |
| <b>Immunogen</b>         | A synthetic peptide of human Lamin B1 |

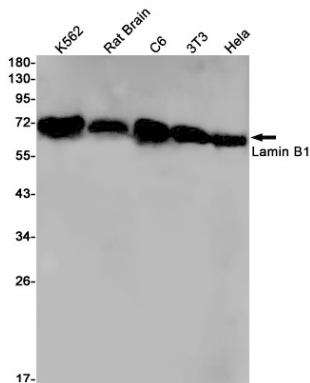
**Background**

This gene encodes one of the two B-type lamin proteins and is a component of the nuclear lamina. A duplication of this gene is associated with autosomal dominant adult-onset leukodystrophy (ADLD). Alternative splicing results in multiple transcript

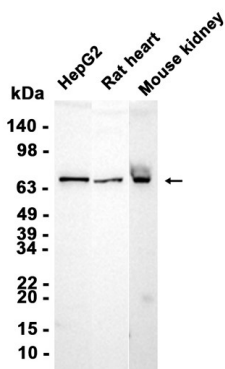
variants. [provided by RefSeq, Dec 2015]

## Research Area

## Image Data



Western blot detection of Lamin B1 in K562, Rat Brain, C6, 3T3, HeLa cell lysates using Lamin B1 antibody (1:1000 diluted).



Western blot analysis of extracts from HepG2 cells and Rat heart, Mouse kidney tissue using AMRe86356 at 1:1000.