

Summary

Production Name	RCN1 Rabbit Monoclonal Antibody
Description	Rabbit Monoclonal antibody
Host	Rabbit
Application	WB, IHC-P, ICC/IF, FC, IP
Reactivity	Human,Mouse,Rat

Performance

Conjugation	Unconjugated
Modification	Unmodified
Isotype	IgG
Clonality	Monoclonal
Form	Liquid
Storage	Store at 4°C short term. Aliquot and store at -20°C long term. Avoid freeze/thaw cycles.
Buffer	Supplied in 50mM Tris-Glycine(pH 7.4), 0.15M NaCl, 40% Glycerol, 0.01% sodium azide and 0.05% BSA. Stable for 12 months from date of receipt.
Purification	Affinity Purification

Immunogen

Gene Name	RCN1
Alternative Names	RCN; RCAL; PIG20; HEL-S-84
Gene ID	5954
SwissProt ID	Q15293.

Application

Dilution Ratio	WB: 1:1000 IHC-P: 1:200-1:2000 ICC/IF: 1:200-1:500 FC: 1:50-1:100 IP: 1:20
Molecular Weight	Calculated MW:39 kDa; Observed MW:45 kDa

Background

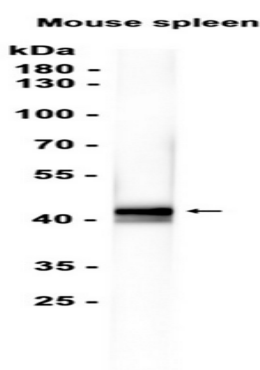
Product Name: RCN1 Rabbit Monoclonal Antibody
Catalog #: AMRe86347



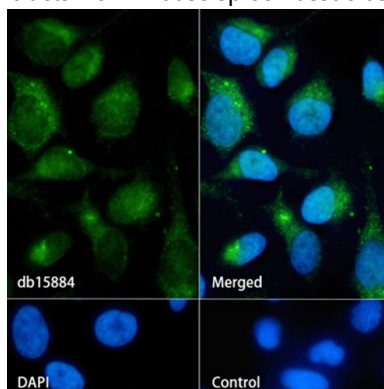
Reticulocalbin 1 is a calcium-binding protein located in the lumen of the ER. The protein contains six conserved regions with similarity to a high affinity Ca^{+2} -binding motif, the EF-hand. High conservation of amino acid residues outside of these motifs, in comparison to mouse reticulocalbin, is consistent with a possible biochemical function besides that of calcium binding. In human endothelial and prostate cancer cell lines this protein localizes to the plasma membrane.
[provided by RefSeq, Jan 2009]

Research Area

Image Data



Western blot analysis of extracts from Mouse spleen tissue using AMRe86347 at 1:1000.



Immunofluorescence analysis of HeLa cells labelling RCN1 with AMRe86347.

Note

For research use only.