

Product Name: NeuroD1 Rabbit Monoclonal Antibody**Catalog #: AMRe86337**

For research use only.

Summary

Description	Recombinant rabbit monoclonal antibody
Host	Rabbit
Application	WB, ICC/IF
Reactivity	Human, Mouse, Rat
Conjugation	Unconjugated
Modification	Unmodified
Isotype	IgG
Clonality	Monoclonal
Form	Liquid
Concentration	
Storage	Aliquot and store at -20°C (valid for 12 months). Avoid freeze/thaw cycles.
Shipping	Ice bags
Buffer	Supplied in 50mM Tris-Glycine (pH 7.4), 0.15M NaCl, 40% Glycerol, 0.01% sodium azide and 0.05% protective protein. Stable for 12 months from date of receipt.
Purification	Affinity Purification

Application

Dilution Ratio	WB 1:1000-1:5000, ICC/IF 1:100-1:200
Molecular Weight	Calculated MW: 40 kDa; Observed MW: 49 kDa

Antigen Information

Gene Name	NeuroD1
Alternative Names	BETA2; BHF-1; MODY6; NEUROD; bHLHa3
Gene ID	4760
SwissProt ID	Q13562
Immunogen	A synthetic peptide of human NeuroD1

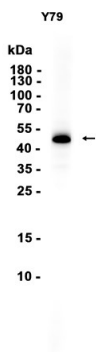
Background

This gene encodes a member of the NeuroD family of basic helix-loop-helix (bHLH) transcription factors. The protein forms heterodimers with other bHLH proteins and activates transcription of genes that contain a specific DNA sequence known as the

E-box. It regulates expression of the insulin gene, and mutations in this gene result in type II diabetes mellitus. [provided by RefSeq, Jul 2008]

Research Area

Image Data



Western blot analysis of extracts from Y79 cells using NeuroD1 Rabbit Monoclonal Antibody at 1:1000.