

**Product Name: Vitronectin Rabbit Monoclonal Antibody****Catalog #: AMRe86333**

For research use only.

**Summary**

<b>Description</b>	Recombinant rabbit monoclonal antibody
<b>Host</b>	Rabbit
<b>Application</b>	WB,IHC
<b>Reactivity</b>	Human
<b>Conjugation</b>	Unconjugated
<b>Modification</b>	Unmodified
<b>Isotype</b>	IgG
<b>Clonality</b>	Monoclonal
<b>Form</b>	Liquid
<b>Concentration</b>	
<b>Storage</b>	Aliquot and store at -20°C (valid for 12 months). Avoid freeze/thaw cycles.
<b>Shipping</b>	Ice bags
<b>Buffer</b>	Supplied in 50mM Tris-Glycine(pH 7.4), 0.15M NaCl, 40% Glycerol, 0.01% sodium azide and 0.05% protective protein. Stable for 12 months from date of receipt.
<b>Purification</b>	Affinity Purification

**Application**

<b>Dilution Ratio</b>	WB 1:1000-1:5000,IHC 1:50-1:200
<b>Molecular Weight</b>	Calculated MW:54 kDa; Observed MW:78 kDa

**Antigen Information**

<b>Gene Name</b>	Vitronectin
<b>Alternative Names</b>	VN; V75; VNT; S-Protein
<b>Gene ID</b>	7448
<b>SwissProt ID</b>	P04004
<b>Immunogen</b>	A synthetic peptide of human Vitronectin

**Background**

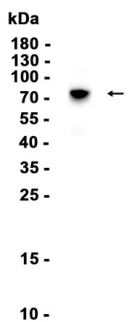
The protein encoded by this gene is a member of the pexin family. It is found in serum and tissues and promotes cell adhesion and spreading, inhibits the membrane-damaging effect of the terminal cytolytic complement pathway, and binds to several

serpin serine protease inhibitors. It is a secreted protein and exists in either a single chain form or a clipped, two chain form held together by a disulfide bond. [provided by RefSeq, Jul 2008]

## Research Area

## Image Data

Human plasma



Western blot analysis of extracts from Human plasma tissue using Vitronectin Rabbit Monoclonal Antibody at 1:1000.