
Product Name: PDE3A Rabbit Monoclonal Antibody**Catalog #: AMRe86327**

For research use only.

Summary

Description	Recombinant rabbit monoclonal antibody
Host	Rabbit
Application	WB,IP
Reactivity	Human,Mouse,Rat
Conjugation	Unconjugated
Modification	Unmodified
Isotype	IgG
Clonality	Monoclonal
Form	Liquid
Concentration	
Storage	Aliquot and store at -20°C (valid for 12 months). Avoid freeze/thaw cycles.
Shipping	Ice bags
Buffer	Supplied in 50mM Tris-Glycine(pH 7.4), 0.15M NaCl, 40% Glycerol, 0.01% sodium azide and 0.05% protective protein. Stable for 12 months from date of receipt.
Purification	Affinity Purification

Application

Dilution Ratio	WB 1:1000-1:5000,IP 1:10-1:100
Molecular Weight	Calculated MW:125 kDa; Observed MW:125 kDa

Antigen Information

Gene Name	PDE3A
Alternative Names	HTNB; CGI-PDE; CGI-PDE A; CGI-PDE-A
Gene ID	5139
SwissProt ID	Q14432
Immunogen	Recombinant protein of human PDE3A

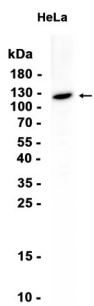
Background

This gene encodes a member of the cGMP-inhibited cyclic nucleotide phosphodiesterase (cGI-PDE) family. cGI-PDE enzymes hydrolyze both cAMP and cGMP, and play critical roles in many cellular processes by regulating the amplitude and duration of

intracellular cyclic nucleotide signals. The encoded protein mediates platelet aggregation and also plays important roles in cardiovascular function by regulating vascular smooth muscle contraction and relaxation. Inhibitors of the encoded protein may be effective in treating congestive heart failure. Alternatively spliced transcript variants encoding multiple isoforms have been observed for this gene. [provided by RefSeq, Sep 2011]

Research Area

Image Data



Western blot analysis of extracts from HeLa cells using PDE3A Rabbit Monoclonal Antibody at 1:1000.