

---

**Product Name: Lin28A Rabbit Monoclonal Antibody****Catalog #: AMRe86310**

For research use only.

**Summary**

<b>Description</b>	Recombinant rabbit monoclonal antibody
<b>Host</b>	Rabbit
<b>Application</b>	WB,ICC/IF,FC,IP
<b>Reactivity</b>	Human
<b>Conjugation</b>	Unconjugated
<b>Modification</b>	Unmodified
<b>Isotype</b>	IgG
<b>Clonality</b>	Monoclonal
<b>Form</b>	Liquid
<b>Concentration</b>	
<b>Storage</b>	Aliquot and store at -20°C (valid for 12 months). Avoid freeze/thaw cycles.
<b>Shipping</b>	Ice bags
<b>Buffer</b>	Supplied in 50mM Tris-Glycine(pH 7.4), 0.15M NaCl, 40% Glycerol, 0.01% sodium azide and 0.05% protective protein. Stable for 12 months from date of receipt.
<b>Purification</b>	Affinity Purification

**Application**

<b>Dilution Ratio</b>	WB 1:2000-1:20000,ICC/IF 1:100-1:500,FC 1:10-1:100,IP 1:10-1:100
<b>Molecular Weight</b>	Calculated MW:23 kDa; Observed MW:26 kDa

**Antigen Information**

<b>Gene Name</b>	Lin28A
<b>Alternative Names</b>	CSDD1; LIN28; LIN-28; ZCCHC1; lin-28A
<b>Gene ID</b>	79727
<b>SwissProt ID</b>	Q9H9Z2
<b>Immunogen</b>	A synthetic peptide of human Lin28A

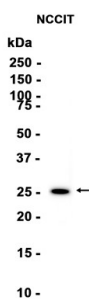
**Background**

This gene encodes a LIN-28 family RNA-binding protein that acts as a posttranscriptional regulator of genes involved in developmental timing and self-renewal in embryonic stem cells. The encoded protein functions through direct interaction with

target mRNAs and by disrupting the maturation of certain miRNAs involved in embryonic development. This protein prevents the terminal processing of the LET7 family of microRNAs which are major regulators of cellular growth and differentiation. Aberrant expression of this gene is associated with cancer progression in multiple tissues. [provided by RefSeq, Sep 2015]

## Research Area

## Image Data



Western blot analysis of extracts from NCCIT cells using Lin28A Rabbit Monoclonal Antibody at 1:1000.