

**Product Name: Ki67 Rabbit Monoclonal Antibody****Catalog #: AMRe86304**

For research use only.

**Summary**

<b>Description</b>	Recombinant rabbit monoclonal antibody
<b>Host</b>	Rabbit
<b>Application</b>	WB,IHC,ICC/IF,FC
<b>Reactivity</b>	Human, Mouse, Rat
<b>Conjugation</b>	Unconjugated
<b>Modification</b>	Unmodified
<b>Isotype</b>	IgG
<b>Clonality</b>	Monoclonal
<b>Form</b>	Liquid
<b>Concentration</b>	
<b>Storage</b>	Aliquot and store at -20°C (valid for 12 months). Avoid freeze/thaw cycles.
<b>Shipping</b>	Ice bags
<b>Buffer</b>	Supplied in 50mM Tris-Glycine(pH 7.4), 0.15M NaCl, 40% Glycerol, 0.01% sodium azide and 0.05% protective protein. Stable for 12 months from date of receipt.
<b>Purification</b>	Affinity Purification

**Application**

<b>Dilution Ratio</b>	WB 1:1000-1:10000,IHC 1:200-1:1000,ICC/IF 1:200-1:1000,FC 1:1000-1:10000
<b>Molecular Weight</b>	Calculated MW:359 kDa; Observed MW:359 kDa

**Antigen Information**

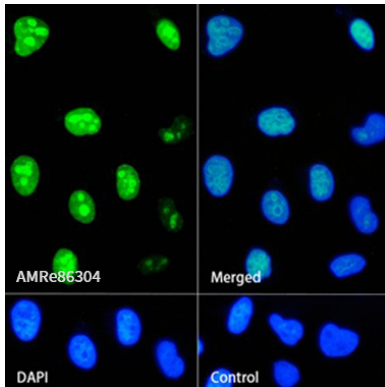
<b>Gene Name</b>	Ki67
<b>Alternative Names</b>	KiA; MIB-; MIB-1; PPP1R105
<b>Gene ID</b>	4288
<b>SwissProt ID</b>	P46013
<b>Immunogen</b>	A synthetic peptide of human Ki67

**Background**

This gene encodes a nuclear protein that is associated with and may be necessary for cellular proliferation. Alternatively spliced transcript variants have been described. A related pseudogene exists on chromosome X. [provided by RefSeq, Mar 2009]

## Research Area

## Image Data



Immunofluorescence analysis of HeLa cells labelling Ki67 with Ki67 Rabbit Monoclonal Antibody.