

Product Name: DRP1 Rabbit Monoclonal Antibody**Catalog #: AMRe86296**

For research use only.

Summary

Description	Recombinant rabbit monoclonal antibody
Host	Rabbit
Application	WB,IHC,ICC/IF,FC,IP
Reactivity	Human,Mouse,Rat
Conjugation	Unconjugated
Modification	Unmodified
Isotype	IgG
Clonality	Monoclonal
Form	Liquid
Concentration	1.7mg/ml. The concentration of this product may be batch-dependent.
Storage	Aliquot and store at -20°C (valid for 12 months). Avoid freeze/thaw cycles.
Shipping	Ice bags
Buffer	Supplied in 50mM Tris-Glycine(pH 7.4), 0.15M NaCl, 40% Glycerol, 0.01% sodium azide and 0.05% protective protein. Stable for 12 months from date of receipt.
Purification	Affinity Purification

Application

Dilution Ratio	WB 1:500-1:2000,IHC 1:200-1:1000,ICC/IF 1:100-1:200,FC 1:50-1:100,IP 1:20-1:50
Molecular Weight	Calculated MW:82 kDa; Observed MW:82 kDa

Antigen Information

Gene Name	DRP1
Alternative Names	Dlp1; Drp1; Dnmlp1; python; AI450666; 6330417M19Rik
Gene ID	74006
SwissProt ID	Q8K1M6
Immunogen	Recombinant protein of mouse DRP1

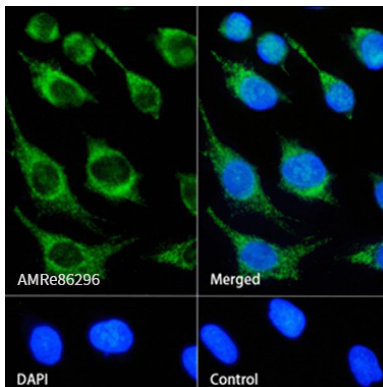
Background

This gene encodes a member of the dynamin family. The encoded protein is localized to the cytoplasm and mitochondrial membrane, is involved in mitochondrial and peroxisomal division, and is essential for mitochondrial fission. Alternative splicing

results in multiple transcript variants. A related pseudogene has been identified on chromosome 2. [provided by RefSeq, Feb 2013]

Research Area

Image Data



Immunofluorescence analysis of HeLa cells labelling DRP1 with DRP1 Rabbit Monoclonal Antibody.