

Product Name: Myoferlin Rabbit Monoclonal Antibody**Catalog #: AMRe86295**

For research use only.

Summary

Description	Recombinant rabbit monoclonal antibody
Host	Rabbit
Application	WB,ICC/IF,FC
Reactivity	Human,Mouse,Rat
Conjugation	Unconjugated
Modification	Unmodified
Isotype	IgG
Clonality	Monoclonal
Form	Liquid
Concentration	
Storage	Aliquot and store at -20°C (valid for 12 months). Avoid freeze/thaw cycles.
Shipping	Ice bags
Buffer	Supplied in 50mM Tris-Glycine(pH 7.4), 0.15M NaCl, 40% Glycerol, 0.01% sodium azide and 0.05% protective protein. Stable for 12 months from date of receipt.
Purification	Affinity Purification

Application

Dilution Ratio	WB 1:500-1:2000,ICC/IF 1:100-1:200,FC 1:200-1:500
Molecular Weight	Calculated MW:235 kDa; Observed MW:250 kDa

Antigen Information

Gene Name	Myoferlin
Alternative Names	FER1L3
Gene ID	26509
SwissProt ID	Q9NZM1
Immunogen	A synthetic peptide of human Myoferlin

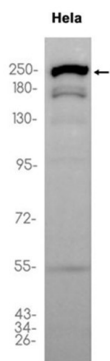
Background

Mutations in dysferlin, a protein associated with the plasma membrane, can cause muscle weakness that affects both proximal and distal muscles. The protein encoded by this gene is a type II membrane protein that is structurally similar to dysferlin. It is a

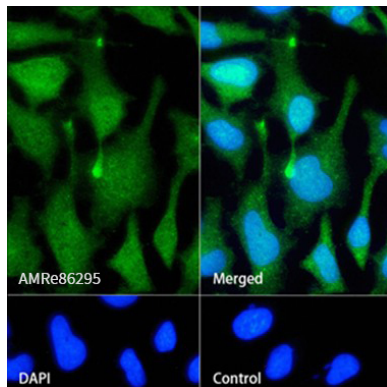
member of the ferlin family and associates with both plasma and nuclear membranes. The protein contains C2 domains that play a role in calcium-mediated membrane fusion events, suggesting that it may be involved in membrane regeneration and repair. Two transcript variants encoding different isoforms have been found for this gene. Other possible variants have been detected, but their full-length nature has not been determined. [provided by RefSeq, Dec 2008]

Research Area

Image Data



Western blot analysis of extracts from HeLa cells using Myoferlin Rabbit Monoclonal Antibody at 1:1000.



Immunofluorescence analysis of HeLa cells labelling Myoferlin with AMRe86295.