
Product Name: SLC1A5 Rabbit Monoclonal Antibody**Catalog #: AMRe86292**

For research use only.

Summary

Description	Recombinant rabbit monoclonal antibody
Host	Rabbit
Application	WB,IHC,ICC/IF,FC,IP
Reactivity	Human
Conjugation	Unconjugated
Modification	Unmodified
Isotype	IgG
Clonality	Monoclonal
Form	Liquid
Concentration	
Storage	Aliquot and store at -20°C (valid for 12 months). Avoid freeze/thaw cycles.
Shipping	Ice bags
Buffer	Supplied in 50mM Tris-Glycine(pH 7.4), 0.15M NaCl, 40% Glycerol, 0.01% sodium azide and 0.05% protective protein. Stable for 12 months from date of receipt.
Purification	Affinity Purification

Application

Dilution Ratio	WB 1:500-1:2000,IHC 1:200-1:2000,ICC/IF 1:20-1:50,FC 1:20-1:50,IP 1:20-1:50
Molecular Weight	Calculated MW:57 kDa; Observed MW:70-75 kDa

Antigen Information

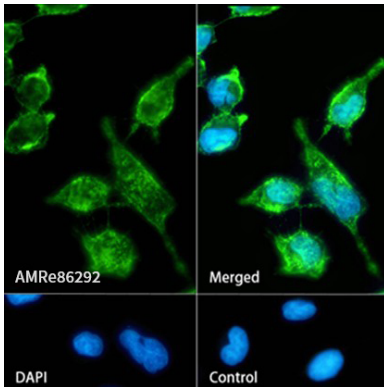
Gene Name	SLC1A5
Alternative Names	R16; AAAT; ATBO; M7V1; RDRC; ASCT2; M7VS1
Gene ID	6510
SwissProt ID	Q15758
Immunogen	A synthetic peptide of human SLC1A5

Background

The SLC1A5 gene encodes a sodium-dependent neutral amino acid transporter that can act as a receptor for RD114/type D retrovirus (Larriba et al., 2001 [PubMed 11781704]).[supplied by OMIM, Jan 2011]

Research Area

Image Data



Immunofluorescence analysis of HeLa cells labelling SLC1A5 with SLC1A5 Rabbit Monoclonal Antibody.