

Product Name: GAPDH Rabbit Monoclonal Antibody
Catalog #: AMRe86291



Summary

Production Name	GAPDH Rabbit Monoclonal Antibody
Description	Rabbit Monoclonal antibody
Host	Rabbit
Application	WB, IHC-P, ICC/IF, FC, IP
Reactivity	Human, Mouse, Rat, Monkey, Rabbit, Chicken, Zebrafish, Rabbit, Xenopus tropicalis, Chinese hamster, E. Escherichia coli

Performance

Conjugation	Unconjugated
Modification	Unmodified
Isotype	IgG
Clonality	Monoclonal
Form	Liquid
Storage	Store at 4°C short term. Aliquot and store at -20°C long term. Avoid freeze/thaw cycles.
Buffer	Supplied in 50mM Tris-Glycine(pH 7.4), 0.15M NaCl, 40% Glycerol, 0.01% sodium azide and 0.05% BSA. Stable for 12 months from date of receipt.
Purification	Affinity Purification

Immunogen

Gene Name	GAPDH
Alternative Names	G3PD; GAPD; HEL-S-162eP
Gene ID	14433
SwissProt ID	P16858.

Application

Dilution Ratio	WB: 1:1000-1:5000 IHC-P: 1:200-1:2000 ICC/IF: 1:200-1:500 FC: 1:100-1:200 IP: 1:50
Molecular Weight	Calculated MW:36 kDa; Observed MW:36 kDa

Product Name: GAPDH Rabbit Monoclonal Antibody
Catalog #: AMRe86291

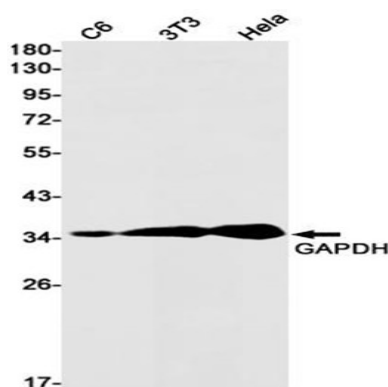


Background

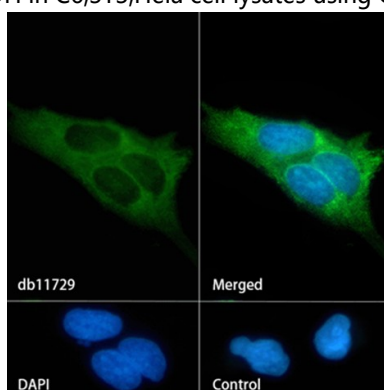
This gene encodes a member of the glyceraldehyde-3-phosphate dehydrogenase protein family. The encoded protein has been identified as a moonlighting protein based on its ability to perform mechanistically distinct functions. The encoded protein was originally identified as a key glycolytic enzyme that converts D-glyceraldehyde 3-phosphate (G3P) into 3-phospho-D-glyceroyl phosphate. Subsequent studies have assigned a variety of additional functions to the protein including nitrosylation of nuclear proteins, the regulation of mRNA stability, and acting as a transferrin receptor on the cell surface of macrophage. Alternative splicing results in multiple transcript variants. Many pseudogenes similar to this locus are found throughout the mouse genome. [provided by RefSeq, Jan 2014]

Research Area

Image Data



Western blot detection of GAPDH in C6,3T3,HeLa cell lysates using GAPDH antibody(1:1000 diluted).



Immunofluorescence analysis of HeLa cells labelling GAPDH with AMRe86291.

Note

For research use only.