

**Product Name: CORD2 Rabbit Monoclonal Antibody****Catalog #: AMRe86284**

For research use only.

**Summary**

<b>Description</b>	Recombinant rabbit monoclonal antibody
<b>Host</b>	Rabbit
<b>Application</b>	WB,IHC
<b>Reactivity</b>	Human
<b>Conjugation</b>	Unconjugated
<b>Modification</b>	Unmodified
<b>Isotype</b>	IgG
<b>Clonality</b>	Monoclonal
<b>Form</b>	Liquid
<b>Concentration</b>	
<b>Storage</b>	Aliquot and store at -20°C (valid for 12 months). Avoid freeze/thaw cycles.
<b>Shipping</b>	Ice bags
<b>Buffer</b>	Supplied in 50mM Tris-Glycine(pH 7.4), 0.15M NaCl, 40% Glycerol, 0.01% sodium azide and 0.05% protective protein. Stable for 12 months from date of receipt.
<b>Purification</b>	Affinity Purification

**Application**

<b>Dilution Ratio</b>	WB 1:1000-1:5000,IHC 1:200-1:500
<b>Molecular Weight</b>	Calculated MW:32 kDa; Observed MW:38 kDa

**Antigen Information**

<b>Gene Name</b>	CORD2
<b>Alternative Names</b>	CRD; LCA7; OTX3; CORD2
<b>Gene ID</b>	1406
<b>SwissProt ID</b>	O43186
<b>Immunogen</b>	A synthetic peptide of human CORD2

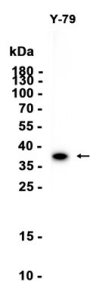
**Background**

The protein encoded by this gene is a photoreceptor-specific transcription factor which plays a role in the differentiation of photoreceptor cells. This homeodomain protein is necessary for the maintenance of normal cone and rod function. Mutations

in this gene are associated with photoreceptor degeneration, Leber congenital amaurosis type III and the autosomal dominant cone-rod dystrophy 2. Several alternatively spliced transcript variants of this gene have been described, but the full-length nature of some variants has not been determined. [provided by RefSeq, Jul 2008]

## Research Area

## Image Data



Western blot analysis of extracts from Y-79 cells using CORD2 Rabbit Monoclonal Antibody at 1:1000.