

**Product Name: SKP2 Rabbit Monoclonal Antibody**  
**Catalog #: AMRe86276**



## Summary

<b>Production Name</b>	SKP2 Rabbit Monoclonal Antibody
<b>Description</b>	Rabbit Monoclonal antibody
<b>Host</b>	Rabbit
<b>Application</b>	WB, ICC/IF
<b>Reactivity</b>	Human

## Performance

<b>Conjugation</b>	Unconjugated
<b>Modification</b>	Unmodified
<b>Isotype</b>	IgG
<b>Clonality</b>	Monoclonal
<b>Form</b>	Liquid
<b>Storage</b>	Store at 4°C short term. Aliquot and store at -20°C long term. Avoid freeze/thaw cycles.
<b>Buffer</b>	Supplied in 50mM Tris-Glycine(pH 7.4), 0.15M NaCl, 40% Glycerol, 0.01% sodium azide and 0.05% BSA. Stable for 12 months from date of receipt.
<b>Purification</b>	Affinity Purification

## Immunogen

<b>Gene Name</b>	SKP2
<b>Alternative Names</b>	p45; FBL1; FLB1; FBXL1
<b>Gene ID</b>	6502
<b>SwissProt ID</b>	Q13309.

## Application

<b>Dilution Ratio</b>	WB: 1:1000-1:5000 ICC/IF: 1:50-1:100
<b>Molecular Weight</b>	Calculated MW:48 kDa; Observed MW:48 kDa

## Background

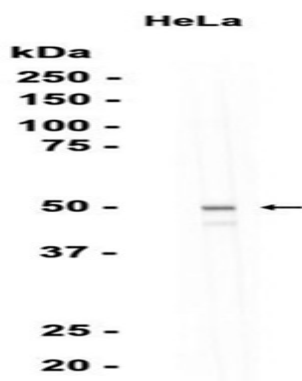
**Product Name: SKP2 Rabbit Monoclonal Antibody**  
**Catalog #: AMRe86276**



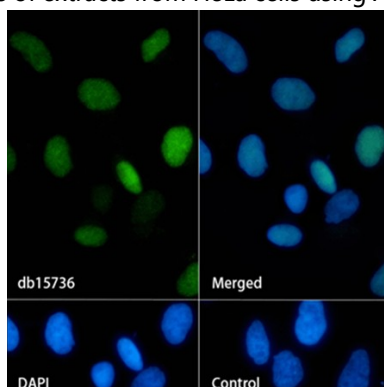
This gene encodes a member of the F-box protein family which is characterized by an approximately 40 amino acid motif, the F-box. The F-box proteins constitute one of the four subunits of ubiquitin protein ligase complex called SCFs (SKP1-cullin-F-box), which function in phosphorylation-dependent ubiquitination. The F-box proteins are divided into 3 classes: Fbws containing WD-40 domains, Fbls containing leucine-rich repeats, and Fbxs containing either different protein-protein interaction modules or no recognizable motifs. The protein encoded by this gene belongs to the Fbls class; in addition to an F-box, this protein contains 10 tandem leucine-rich repeats. This protein is an essential element of the cyclin A-CDK2 S-phase kinase. It specifically recognizes phosphorylated cyclin-dependent kinase inhibitor 1B (CDKN1B, also referred to as p27 or KIP1) predominantly in S phase and interacts with S-phase kinase-associated protein 1 (SKP1 or p19). In addition, this gene is established as a protooncogene causally involved in the pathogenesis of lymphomas. Alternative splicing of this gene generates three transcript variants encoding different isoforms. [provided by RefSeq, Jul 2011]

## Research Area

## Image Data



Western blot analysis of extracts from HeLa cells using AMRe86276 at 1:1000.



Immunofluorescence analysis of HeLa cells labelling SKP2 with AMRe86276.

**Product Name: SKP2 Rabbit Monoclonal Antibody**  
**Catalog #: AMRe86276**

---



**Note**

For research use only.