

**Product Name: SAM68 Rabbit Monoclonal Antibody****Catalog #: AMRe86275**

For research use only.

**Summary**

<b>Description</b>	Recombinant rabbit monoclonal antibody
<b>Host</b>	Rabbit
<b>Application</b>	WB,IHC,ICC/IF
<b>Reactivity</b>	Human,Mouse,Rat
<b>Conjugation</b>	Unconjugated
<b>Modification</b>	Unmodified
<b>Isotype</b>	IgG
<b>Clonality</b>	Monoclonal
<b>Form</b>	Liquid
<b>Concentration</b>	
<b>Storage</b>	Aliquot and store at -20°C (valid for 12 months). Avoid freeze/thaw cycles.
<b>Shipping</b>	Ice bags
<b>Buffer</b>	Supplied in 50mM Tris-Glycine(pH 7.4), 0.15M NaCl, 40% Glycerol, 0.01% sodium azide and 0.05% protective protein. Stable for 12 months from date of receipt.
<b>Purification</b>	Affinity Purification

**Application**

<b>Dilution Ratio</b>	WB 1:5000-1:50000,IHC 1:100-1:200,ICC/IF 1:100-1:200
<b>Molecular Weight</b>	Calculated MW:49 kDa; Observed MW:68 kDa

**Antigen Information**

<b>Gene Name</b>	SAM68
<b>Alternative Names</b>	p62; p68; Sam68
<b>Gene ID</b>	10657
<b>SwissProt ID</b>	Q07666
<b>Immunogen</b>	A synthetic peptide of human SAM68

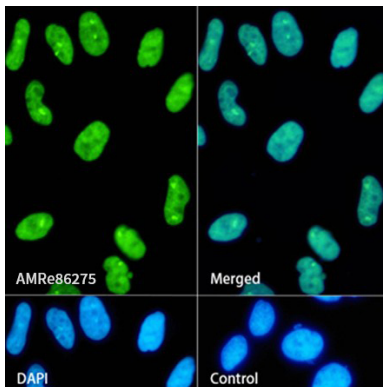
**Background**

This gene encodes a member of the K homology domain-containing, RNA-binding, signal transduction-associated protein family. The encoded protein appears to have many functions and may be involved in a variety of cellular processes, including

alternative splicing, cell cycle regulation, RNA 3'-end formation, tumorigenesis, and regulation of human immunodeficiency virus gene expression. Alternative splicing results in multiple transcript variants. [provided by RefSeq, Dec 2012]

## Research Area

## Image Data



Immunofluorescence analysis of HeLa cells labelling SAM68 with SAM68 Rabbit Monoclonal Antibody.