

Summary

| | |
|------------------------|----------------------------------|
| Production Name | PARP1 Rabbit Monoclonal Antibody |
| Description | Rabbit Monoclonal antibody |
| Host | Rabbit |
| Application | WB, IHC-P, ICC/IF, FC |
| Reactivity | Human |

Performance

| | |
|---------------------|---|
| Conjugation | Unconjugated |
| Modification | Unmodified |
| Isotype | IgG |
| Clonality | Monoclonal |
| Form | Liquid |
| Storage | Store at 4°C short term. Aliquot and store at -20°C long term. Avoid freeze/thaw cycles. |
| Buffer | Supplied in 50mM Tris-Glycine(pH 7.4), 0.15M NaCl, 40% Glycerol, 0.01% sodium azide and 0.05% BSA. Stable for 12 months from date of receipt. |
| Purification | Affinity Purification |

Immunogen

| | |
|--------------------------|---|
| Gene Name | PARP1 |
| Alternative Names | PARP; PPOL; ADPRT; ARTD1; ADPRT1; PARP-1; ADPRT 1; pADPRT-1 |
| Gene ID | 142 |
| SwissProt ID | P09874. |

Application

| | |
|-------------------------|--|
| Dilution Ratio | WB: 1:1000-1:5000 IHC-P: 1:100-1:200 ICC/IF: 1:100 FC: 1:20-1:50 |
| Molecular Weight | Calculated MW:113 kDa; Observed MW:116,24 kDa |

Background

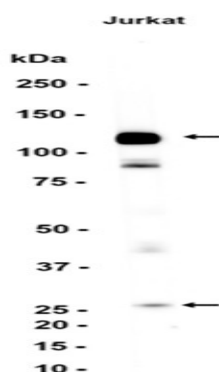
Product Name: PARP1 Rabbit Monoclonal Antibody
Catalog #: AMRe86274



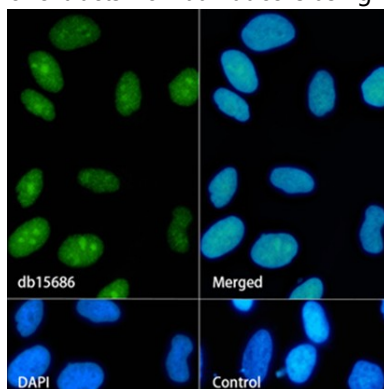
This gene encodes a chromatin-associated enzyme, poly(ADP-ribosyl)transferase, which modifies various nuclear proteins by poly(ADP-ribosyl)ation. The modification is dependent on DNA and is involved in the regulation of various important cellular processes such as differentiation, proliferation, and tumor transformation and also in the regulation of the molecular events involved in the recovery of cell from DNA damage. In addition, this enzyme may be the site of mutation in Fanconi anemia, and may participate in the pathophysiology of type I diabetes. [provided by RefSeq, Jul 2008]

Research Area

Image Data



Western blot analysis of extracts from Jurkat cells using AMRe86274 at 1:1000.



Immunofluorescence analysis of HeLa cells labelling PARP1 with AMRe86274.

Note

For research use only.