

Product Name: WSTF Rabbit Monoclonal Antibody**Catalog #: AMRe86273**

For research use only.

Summary

Description	Recombinant rabbit monoclonal antibody
Host	Rabbit
Application	WB,IHC,ICC/IF,FC
Reactivity	Human,Mouse,Rat
Conjugation	Unconjugated
Modification	Unmodified
Isotype	IgG
Clonality	Monoclonal
Form	Liquid
Concentration	
Storage	Aliquot and store at -20°C (valid for 12 months). Avoid freeze/thaw cycles.
Shipping	Ice bags
Buffer	Supplied in 50mM Tris-Glycine(pH 7.4), 0.15M NaCl, 40% Glycerol, 0.01% sodium azide and 0.05% protective protein. Stable for 12 months from date of receipt.
Purification	Affinity Purification

Application

Dilution Ratio	WB 1:2000-1:20000,IHC 1:200-1:500,ICC/IF 1:20-1:50,FC 1:20-1:50
Molecular Weight	Calculated MW:171 kDa; Observed MW:185 kDa

Antigen Information

Gene Name	WSTF
Alternative Names	WSTF; WBSCR9; WBSCR10
Gene ID	9031
SwissProt ID	Q9UIG0
Immunogen	A synthetic peptide of human WSTF

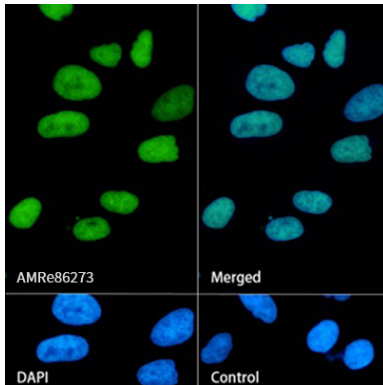
Background

This gene encodes a member of the bromodomain protein family. The bromodomain is a structural motif characteristic of proteins involved in chromatin-dependent regulation of transcription. This gene is deleted in Williams-Beuren syndrome, a

developmental disorder caused by deletion of multiple genes at 7q11.23. [provided by RefSeq, Jul 2008]

Research Area

Image Data



Immunofluorescence analysis of HeLa cells labelling WSTF with WSTF Rabbit Monoclonal Antibody.