
Product Name: Cdc25C Rabbit Monoclonal Antibody**Catalog #: AMRe86271**

For research use only.

Summary

Description	Recombinant rabbit monoclonal antibody
Host	Rabbit
Application	WB,IHC,ICC/IF,FC,IP
Reactivity	Human
Conjugation	Unconjugated
Modification	Unmodified
Isotype	IgG
Clonality	Monoclonal
Form	Liquid
Concentration	
Storage	Aliquot and store at -20°C (valid for 12 months). Avoid freeze/thaw cycles.
Shipping	Ice bags
Buffer	Supplied in 50mM Tris-Glycine(pH 7.4), 0.15M NaCl, 40% Glycerol, 0.01% sodium azide and 0.05% protective protein. Stable for 12 months from date of receipt.
Purification	Affinity Purification

Application

Dilution Ratio	WB 1:1000-1:5000,IHC 1:200-1:2000,ICC/IF 1:200-1:500,FC 1:100-1:200,IP 1:20-1:100
Molecular Weight	Calculated MW:53 kDa; Observed MW:53 kDa

Antigen Information

Gene Name	Cdc25C
Alternative Names	CDC25; PPP1R60
Gene ID	995
SwissProt ID	P30307
Immunogen	A synthetic peptide of human Cdc25C

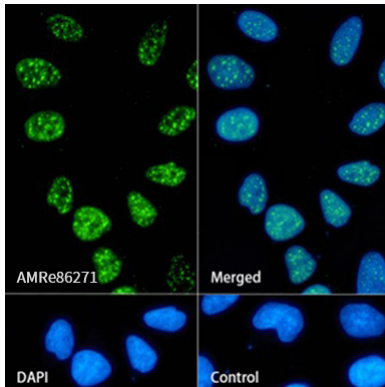
Background

This gene encodes a conserved protein that plays a key role in the regulation of cell division. The encoded protein directs dephosphorylation of cyclin B-bound CDC2 and triggers entry into mitosis. It also suppresses p53-induced growth arrest.

Multiple alternatively spliced transcript variants of this gene have been described. [provided by RefSeq, Dec 2015]

Research Area

Image Data



Immunofluorescence analysis of HeLa cells labelling Cdc25C with Cdc25C Rabbit Monoclonal Antibody.