

Product Name: Cyclin E1 Rabbit Monoclonal Antibody
Catalog #: AMRe86268



Summary

Production Name	Cyclin E1 Rabbit Monoclonal Antibody
Description	Rabbit Monoclonal antibody
Host	Rabbit
Application	WB, IHC-P, ICC/IF, FC, IP
Reactivity	Human

Performance

Conjugation	Unconjugated
Modification	Unmodified
Isotype	IgG
Clonality	Monoclonal
Form	Liquid
Storage	Store at 4°C short term. Aliquot and store at -20°C long term. Avoid freeze/thaw cycles.
Buffer	Supplied in 50mM Tris-Glycine(pH 7.4), 0.15M NaCl, 40% Glycerol, 0.01% sodium azide and 0.05% BSA. Stable for 12 months from date of receipt.
Purification	Affinity Purification

Immunogen

Gene Name	Cyclin E1
Alternative Names	CCNE; pCCNE1
Gene ID	898
SwissProt ID	P24864.

Application

Dilution Ratio	WB: 1:1000 IHC-P: 1:200-1:2000 ICC/IF: 1:100-1:500 FC: 1:20 IP: 1:20-1:50
Molecular Weight	Calculated MW:47 kDa; Observed MW:47 kDa

Background

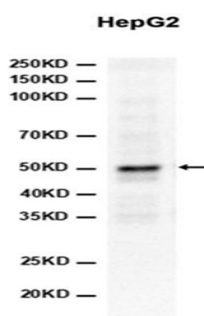
Product Name: Cyclin E1 Rabbit Monoclonal Antibody
Catalog #: AMRe86268



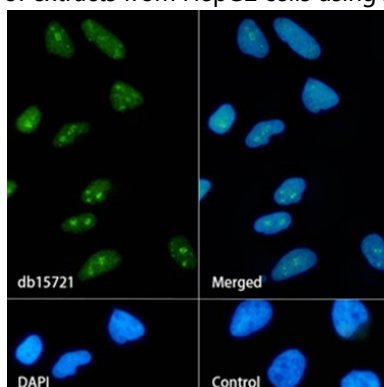
The protein encoded by this gene belongs to the highly conserved cyclin family, whose members are characterized by a dramatic periodicity in protein abundance through the cell cycle. Cyclins function as regulators of CDK kinases. Different cyclins exhibit distinct expression and degradation patterns which contribute to the temporal coordination of each mitotic event. This cyclin forms a complex with and functions as a regulatory subunit of CDK2, whose activity is required for cell cycle G1/S transition. This protein accumulates at the G1-S phase boundary and is degraded as cells progress through S phase. Overexpression of this gene has been observed in many tumors, which results in chromosome instability, and thus may contribute to tumorigenesis. This protein was found to associate with, and be involved in, the phosphorylation of NPAT protein (nuclear protein mapped to the ATM locus), which participates in cell-cycle regulated histone gene expression and plays a critical role in promoting cell-cycle progression in the absence of pRB. [provided by RefSeq, Apr 2016]

Research Area

Image Data



Western blot analysis of extracts from HepG2 cells using AMRe86268 at 1:1000.



Immunofluorescence analysis of HeLa cells labelling Cyclin E1 with AMRe86268.

Product Name: Cyclin E1 Rabbit Monoclonal Antibody
Catalog #: AMRe86268



Note

For research use only.