
Product Name: Cyclin A2 Rabbit Monoclonal Antibody**Catalog #: AMRe86267**

For research use only.

Summary

Description	Recombinant rabbit monoclonal antibody
Host	Rabbit
Application	WB,IHC,ICC/IF,IP
Reactivity	Human
Conjugation	Unconjugated
Modification	Unmodified
Isotype	IgG
Clonality	Monoclonal
Form	Liquid
Concentration	0.55mg/ml. The concentration of this product may be batch-dependent.
Storage	Aliquot and store at -20°C (valid for 12 months). Avoid freeze/thaw cycles.
Shipping	Ice bags
Buffer	Supplied in 50mM Tris-Glycine(pH 7.4), 0.15M NaCl, 40% Glycerol, 0.01% sodium azide and 0.05% protective protein. Stable for 12 months from date of receipt.
Purification	Affinity Purification

Application

Dilution Ratio	WB 1:500-1:2000,IHC 1:200-1:2000,ICC/IF 1:100-1:200,IP 1:20-1:50
Molecular Weight	Calculated MW:49 kDa; Observed MW:49 kDa

Antigen Information

Gene Name	Cyclin A2
Alternative Names	CCN1; CCNA
Gene ID	890
SwissProt ID	P20248
Immunogen	Recombinant protein of human Cyclin A2

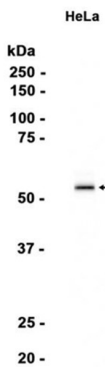
Background

The protein encoded by this gene belongs to the highly conserved cyclin family, whose members function as regulators of the cell cycle. This protein binds and activates cyclin-dependent kinase 2 and thus promotes transition through G1/S and G2/M.

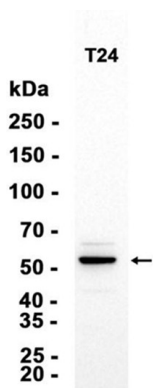
[provided by RefSeq, Aug 2016]

Research Area

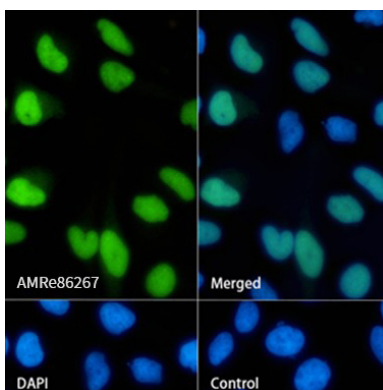
Image Data



Western blot analysis of extracts from HeLa cells using Cyclin A2 Rabbit Monoclonal Antibody at 1:1000.



Western blot analysis of extracts from T24 cells using AMRe86267 at 1:1000.



Immunofluorescence analysis of HeLa cells labelling Cyclin A2 with AMRe86267.