

**Product Name: Rab4 Rabbit Monoclonal Antibody****Catalog #: AMRe86264**

For research use only.

**Summary**

<b>Description</b>	Recombinant rabbit monoclonal antibody
<b>Host</b>	Rabbit
<b>Application</b>	WB, ICC/IF
<b>Reactivity</b>	Human, Mouse, Rat
<b>Conjugation</b>	Unconjugated
<b>Modification</b>	Unmodified
<b>Isotype</b>	IgG
<b>Clonality</b>	Monoclonal
<b>Form</b>	Liquid
<b>Concentration</b>	
<b>Storage</b>	Aliquot and store at -20°C (valid for 12 months). Avoid freeze/thaw cycles.
<b>Shipping</b>	Ice bags
<b>Buffer</b>	Supplied in 50mM Tris-Glycine (pH 7.4), 0.15M NaCl, 40% Glycerol, 0.01% sodium azide and 0.05% protective protein. Stable for 12 months from date of receipt.
<b>Purification</b>	Affinity Purification

**Application**

<b>Dilution Ratio</b>	WB 1:1000-1:5000, ICC/IF 1:100-1:200
<b>Molecular Weight</b>	Calculated MW: 24 kDa; Observed MW: 24 kDa

**Antigen Information**

<b>Gene Name</b>	Rab4
<b>Alternative Names</b>	RAB4; HRES1; HRES-1; HRES-1/RAB4
<b>Gene ID</b>	5867
<b>SwissProt ID</b>	P20338
<b>Immunogen</b>	A synthetic peptide of human Rab4

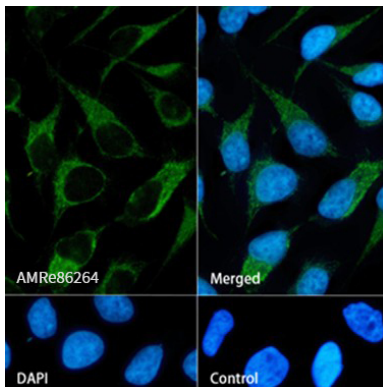
**Background**

This gene is a member of the largest group in the Ras superfamily of small GTPases, which regulate membrane trafficking. The encoded protein is associated with early endosomes and is involved in their sorting and recycling. The protein also plays a role

in regulating the recycling of receptors from endosomes to the plasma membrane. Alternatively spliced transcript variants have been observed for this gene. [provided by RefSeq, Dec 2012]

## Research Area

## Image Data



Immunofluorescence analysis of HeLa cells labelling Rab4 with Rab4 Rabbit Monoclonal Antibody.