

Summary

Production Name	RHEB Rabbit Monoclonal Antibody
Description	Rabbit Monoclonal antibody
Host	Rabbit
Application	WB, IHC-P, ICC/IF, FC
Reactivity	Human

Performance

Conjugation	Unconjugated
Modification	Unmodified
Isotype	IgG
Clonality	Monoclonal
Form	Liquid
Storage	Store at 4°C short term. Aliquot and store at -20°C long term. Avoid freeze/thaw cycles.
Buffer	Supplied in 50mM Tris-Glycine(pH 7.4), 0.15M NaCl, 40% Glycerol, 0.01% sodium azide and 0.05% BSA. Stable for 12 months from date of receipt.
Purification	Affinity Purification

Immunogen

Gene Name	RHEB
Alternative Names	RHEB2
Gene ID	6009
SwissProt ID	Q15382.

Application

Dilution Ratio	WB: 1:1000-1:5000 IHC-P: 1:200-1:500 ICC/IF: 1:100-1:200 FC: 1:20-1:50
Molecular Weight	Calculated MW:21 kDa; Observed MW:21 kDa

Background

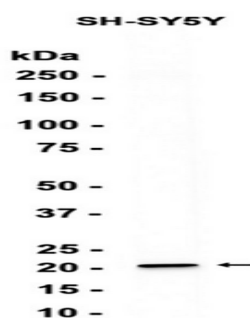
Product Name: RHEB Rabbit Monoclonal Antibody
Catalog #: AMRe86257



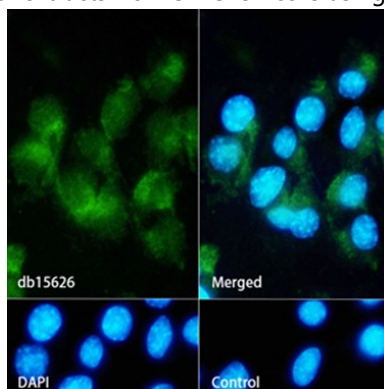
This gene is a member of the small GTPase superfamily and encodes a lipid-anchored, cell membrane protein with five repeats of the RAS-related GTP-binding region. This protein is vital in regulation of growth and cell cycle progression due to its role in the insulin/TOR/S6K signaling pathway. The protein has GTPase activity and shuttles between a GDP-bound form and a GTP-bound form, and farnesylation of the protein is required for this activity. Three pseudogenes have been mapped, two on chromosome 10 and one on chromosome 22. [provided by RefSeq, Jul 2008]

Research Area

Image Data



Western blot analysis of extracts from SH-SY5Y cells using AMRe86257 at 1:1000.



Immunofluorescence analysis of Neuro-2a cells labelling RHEB with AMRe86257.

Note

For research use only.