

Summary

Production Name	MAP1A Rabbit Monoclonal Antibody
Description	Rabbit Monoclonal antibody
Host	Rabbit
Application	WB, ICC/IF, FC
Reactivity	Mouse,Rat

Performance

Conjugation	Unconjugated
Modification	Unmodified
Isotype	IgG
Clonality	Monoclonal
Form	Liquid
Storage	Store at 4°C short term. Aliquot and store at -20°C long term. Avoid freeze/thaw cycles.
Buffer	Supplied in 50mM Tris-Glycine(pH 7.4), 0.15M NaCl, 40% Glycerol, 0.01% sodium azide and 0.05% BSA. Stable for 12 months from date of receipt.
Purification	Affinity Purification

Immunogen

Gene Name	MAP1A
Alternative Names	Mtap1; moth1; Mtap-1; Mtap1a; AI853608; 6330416M19Rik
Gene ID	17754
SwissProt ID	Q9QYR6.

Application

Dilution Ratio	WB: 1:1000 ICC/IF: 1:500-1:1000 FC: 1:100
Molecular Weight	Calculated MW:300 kDa; Observed MW:300, 26 kDa

Background

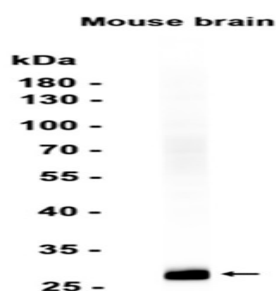
Product Name: MAP1A Rabbit Monoclonal Antibody
Catalog #: AMRe86254



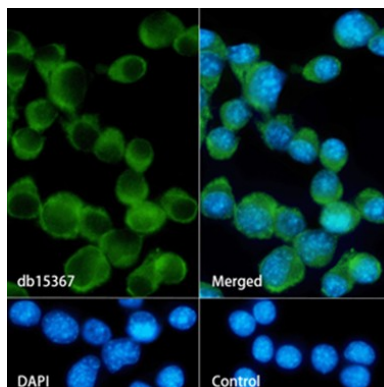
Structural protein involved in the filamentous cross-bridging between microtubules and other skeletal elements.

Research Area

Image Data



Western blot analysis of extracts from Mouse brain tissue using AMRe86254 at 1:1000.



Immunofluorescence analysis of Neuro-2a cells labelling MAP1A with AMRe86254.

Note

For research use only.