

Summary

Production Name	SUN2 Rabbit Monoclonal Antibody
Description	Rabbit Monoclonal antibody
Host	Rabbit
Application	WB, IHC-P, ICC/IF, FC
Reactivity	Human,Mouse,Rat

Performance

Conjugation	Unconjugated
Modification	Unmodified
Isotype	IgG
Clonality	Monoclonal
Form	Liquid
Storage	Store at 4°C short term. Aliquot and store at -20°C long term. Avoid freeze/thaw cycles.
Buffer	Supplied in 50mM Tris-Glycine(pH 7.4), 0.15M NaCl, 40% Glycerol, 0.01% sodium azide and 0.05% BSA. Stable for 12 months from date of receipt.
Purification	Affinity Purification

Immunogen

Gene Name	SUN2
Alternative Names	UNC84B
Gene ID	25777
SwissProt ID	Q9UH99.

Application

Dilution Ratio	WB: 1:1000-1:5000 IHC-P: 1:200-1:1000 ICC/IF: 1:200-1:2000 FC: 1:20-1:50
Molecular Weight	Calculated MW:80 kDa; Observed MW:80 kDa

Background

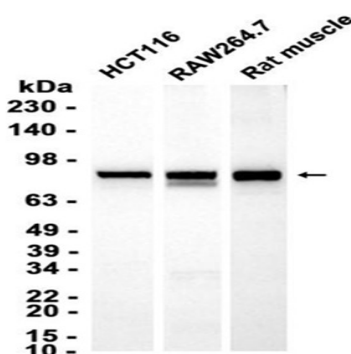
Product Name: SUN2 Rabbit Monoclonal Antibody
Catalog #: AMRe86251



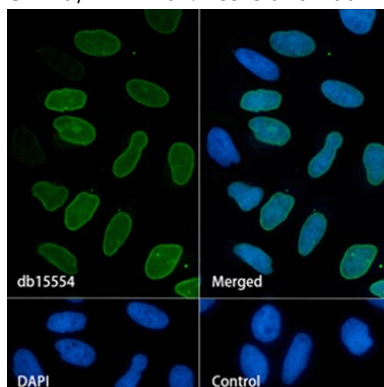
SUN1 (MIM 607723) and SUN2 are inner nuclear membrane (INM) proteins that play a major role in nuclear-cytoplasmic connection by formation of a 'bridge' across the nuclear envelope, known as the LINC complex, via interaction with the conserved luminal KASH domain of nesprins (e.g., SYNE1; MIM 608441) located in the outer nuclear membrane (ONM). The LINC complex provides a direct connection between the nuclear lamina and the cytoskeleton, which contributes to nuclear positioning and cellular rigidity (summary by Haque et al., 2010 [PubMed 19933576]).[supplied by OMIM, Nov 2010]

Research Area

Image Data



Western blot analysis of extracts from HCT116, RAW264.7 cells and Rat muscle tissue using AMRe86251 at 1:2000.



Immunofluorescence analysis of HeLa cells labelling SUN2 with AMRe86251.

Note

For research use only.