

Summary

Production Name	PKM Rabbit Monoclonal Antibody
Description	Rabbit Monoclonal antibody
Host	Rabbit
Application	WB, ICC/IF, FC
Reactivity	Human,Mouse,Rat

Performance

Conjugation	Unconjugated
Modification	Unmodified
Isotype	IgG
Clonality	Monoclonal
Form	Liquid
Storage	Store at 4°C short term. Aliquot and store at -20°C long term. Avoid freeze/thaw cycles.
Buffer	Supplied in 50mM Tris-Glycine(pH 7.4), 0.15M NaCl, 40% Glycerol, 0.01% sodium azide and 0.05% BSA. Stable for 12 months from date of receipt.
Purification	Affinity Purification

Immunogen

Gene Name	PKM
Alternative Names	PK3; TCB; OIP3; PKM2; CTHBP; THBP1; HEL-S-30
Gene ID	5315
SwissProt ID	P14618.

Application

Dilution Ratio	WB: 1:1000-1:5000 ICC/IF: 1:50 FC: 1:20-1:50
Molecular Weight	Calculated MW:58 kDa; Observed MW:58 kDa

Background

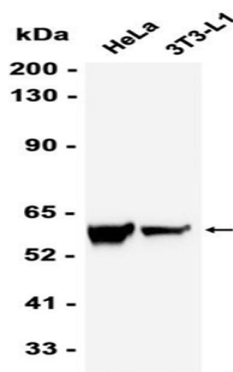
Product Name: PKM Rabbit Monoclonal Antibody
Catalog #: AMRe86250



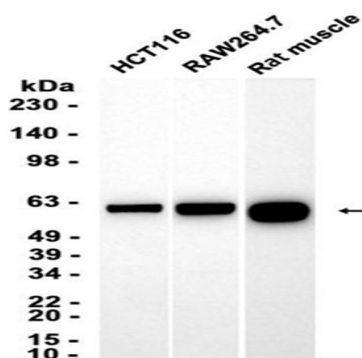
This gene encodes a protein involved in glycolysis. The encoded protein is a pyruvate kinase that catalyzes the transfer of a phosphoryl group from phosphoenolpyruvate to ADP, generating ATP and pyruvate. This protein has been shown to interact with thyroid hormone and may mediate cellular metabolic effects induced by thyroid hormones. This protein has been found to bind Opa protein, a bacterial outer membrane protein involved in gonococcal adherence to and invasion of human cells, suggesting a role of this protein in bacterial pathogenesis. Several alternatively spliced transcript variants encoding a few distinct isoforms have been reported. [provided by RefSeq, May 2011]

Research Area

Image Data

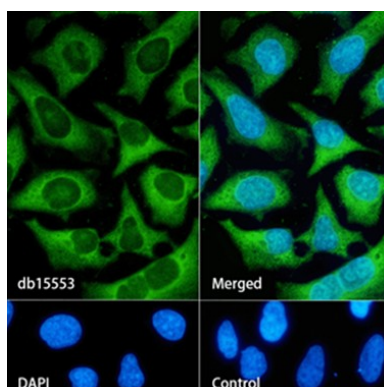


Western blot analysis of extracts from HeLa, 3T3-L1 cells using AMRe86250 at 1:1000.



Western blot analysis of extracts from HCT116, RAW264.7 cells and Rat muscle tissue using AMRe86250 at 1:5000.

Product Name: PKM Rabbit Monoclonal Antibody
Catalog #: AMRe86250



Immunofluorescence analysis of HeLa cells labelling PKM with AMRe86250.

Note

For research use only.