

Product Name: TMEM16A Rabbit Monoclonal Antibody**Catalog #: AMRe86246**

For research use only.

Summary

Description	Recombinant rabbit monoclonal antibody
Host	Rabbit
Application	WB,IHC,ICC/IF,FC
Reactivity	Human
Conjugation	Unconjugated
Modification	Unmodified
Isotype	IgG
Clonality	Monoclonal
Form	Liquid
Concentration	0.5mg/ml. The concentration of this product may be batch-dependent.
Storage	Aliquot and store at -20°C (valid for 12 months). Avoid freeze/thaw cycles.
Shipping	Ice bags
Buffer	Supplied in 50mM Tris-Glycine(pH 7.4), 0.15M NaCl, 40% Glycerol, 0.01% sodium azide and 0.05% protective protein. Stable for 12 months from date of receipt.
Purification	Affinity Purification

Application

Dilution Ratio	WB 1:1000-1:5000,IHC 1:200-1:1000,ICC/IF 1:100-1:200,FC 1:100-1:200
Molecular Weight	Calculated MW:114 kDa; Observed MW:150 kDa

Antigen Information

Gene Name	TMEM16A
Alternative Names	DOG1; INDMS; MYMY7; TAOS2; ORAOV2; TMEM16A
Gene ID	55107
SwissProt ID	Q5XXA6
Immunogen	A synthetic peptide of human TMEM16A

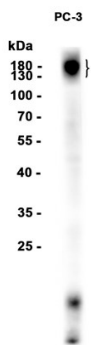
Background

Enables calcium activated cation channel activity; intracellular calcium activated chloride channel activity; and iodide transmembrane transporter activity. Involved in cation transport; inorganic anion transport; and positive regulation of insulin

secretion involved in cellular response to glucose stimulus. Located in apical plasma membrane and nucleoplasm. [provided by Alliance of Genome Resources, Apr 2022]

Research Area

Image Data



Western blot analysis of extracts from PC-3 cells using TMEM16A Rabbit Monoclonal Antibody at 1:1000.