
Product Name: SCARB2 Rabbit Monoclonal Antibody**Catalog #: AMRe86243**

For research use only.

Summary

Description	Recombinant rabbit monoclonal antibody
Host	Rabbit
Application	WB,IHC,ICC/IF,FC
Reactivity	Human, Mouse, Rat
Conjugation	Unconjugated
Modification	Unmodified
Isotype	IgG
Clonality	Monoclonal
Form	Liquid
Concentration	0.5mg/ml. The concentration of this product may be batch-dependent.
Storage	Aliquot and store at -20°C (valid for 12 months). Avoid freeze/thaw cycles.
Shipping	Ice bags
Buffer	Supplied in 50mM Tris-Glycine(pH 7.4), 0.15M NaCl, 40% Glycerol, 0.01% sodium azide and 0.05% protective protein. Stable for 12 months from date of receipt.
Purification	Affinity Purification

Application

Dilution Ratio	WB 1:5000-1:20000,IHC 1:200-1:500,ICC/IF 1:100-1:200,FC 1:100-1:200
Molecular Weight	Calculated MW:54 kDa; Observed MW:80 kDa

Antigen Information

Gene Name	SCARB2
Alternative Names	AMRF; EPM4; LGP85; CD36L2; HLG85; LIMP-2; LIMPII; SR-BII
Gene ID	950, 12492, 117106
SwissProt ID	Q14108, O35114, P27615
Immunogen	A synthetic peptide of human SCARB2

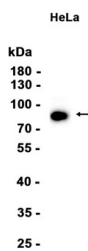
Background

The protein encoded by this gene is a type III glycoprotein that is located primarily in limiting membranes of lysosomes and endosomes. Earlier studies in mice and rat suggested that this protein may participate in membrane transportation and the

reorganization of endosomal/lysosomal compartment. The protein deficiency in mice was reported to impair cell membrane transport processes and cause pelvic junction obstruction, deafness, and peripheral neuropathy. Further studies in human showed that this protein is a ubiquitously expressed protein and that it is involved in the pathogenesis of HFMD (hand, foot, and mouth disease) caused by enterovirus-71 and possibly by coxsackievirus A16. Mutations in this gene caused an autosomal recessive progressive myoclonic epilepsy-4 (EPM4), also known as action myoclonus-renal failure syndrome (AMRF). Alternatively spliced transcript variants encoding different isoforms have been found for this gene.[provided by RefSeq, Feb 2011]

Research Area

Image Data



Western blot analysis of extracts from HeLa cells using SCARB2 Rabbit Monoclonal Antibody at 1:5000.