
Product Name: Cacna2d1 Rabbit Monoclonal Antibody**Catalog #: AMRe86240**

For research use only.

Summary

| | |
|----------------------|--|
| Description | Recombinant rabbit monoclonal antibody |
| Host | Rabbit |
| Application | WB,IHC |
| Reactivity | Mouse, Rat |
| Conjugation | Unconjugated |
| Modification | Unmodified |
| Isotype | IgG |
| Clonality | Monoclonal |
| Form | Liquid |
| Concentration | 0.5mg/ml. The concentration of this product may be batch-dependent. |
| Storage | Aliquot and store at -20°C (valid for 12 months). Avoid freeze/thaw cycles. |
| Shipping | Ice bags |
| Buffer | Supplied in 50mM Tris-Glycine(pH 7.4), 0.15M NaCl, 40% Glycerol, 0.01% sodium azide and 0.05% protective protein. Stable for 12 months from date of receipt. |
| Purification | Affinity Purification |

Application

| | |
|-------------------------|--|
| Dilution Ratio | WB 1:500-1:2000,IHC 1:100-1:200 |
| Molecular Weight | Calculated MW:123 kDa; Observed MW:145-180 kDa |

Antigen Information

| | |
|--------------------------|---------------------------------------|
| Gene Name | Cacna2d1 |
| Alternative Names | Cacna2; Cchl2a; Ca(v)alpha2delta1 |
| Gene ID | 12293 |
| SwissProt ID | Q14BH8 |
| Immunogen | Recombinant protein of mouse Cacna2d1 |

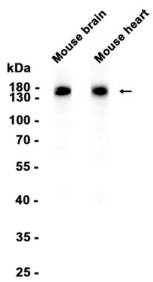
Background

This gene encodes a regulatory component of the voltage-dependent calcium channel complex. The product of this gene is a proprotein that is proteolytically processed into alpha-2 and delta subunits, which are linked by a disulfide bond. Alternatively

spliced transcript variants encoding multiple isoforms have been observed for this gene. [provided by RefSeq, Jan 2013]

Research Area

Image Data



Western blot analysis of extracts from Mouse brain , Mouse heart tissue using Cacna2d1 Rabbit Monoclonal Antibody at 1:1000.